

Design Drawings

for the

MWVTA Multi-Use Pathway Phase II

located in and prepared for the

Town of Conway, New Hampshire

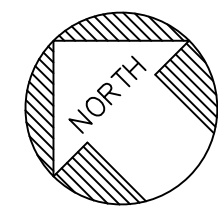
EDA Award # 01-79-15335

HEB Project # 2020-078B

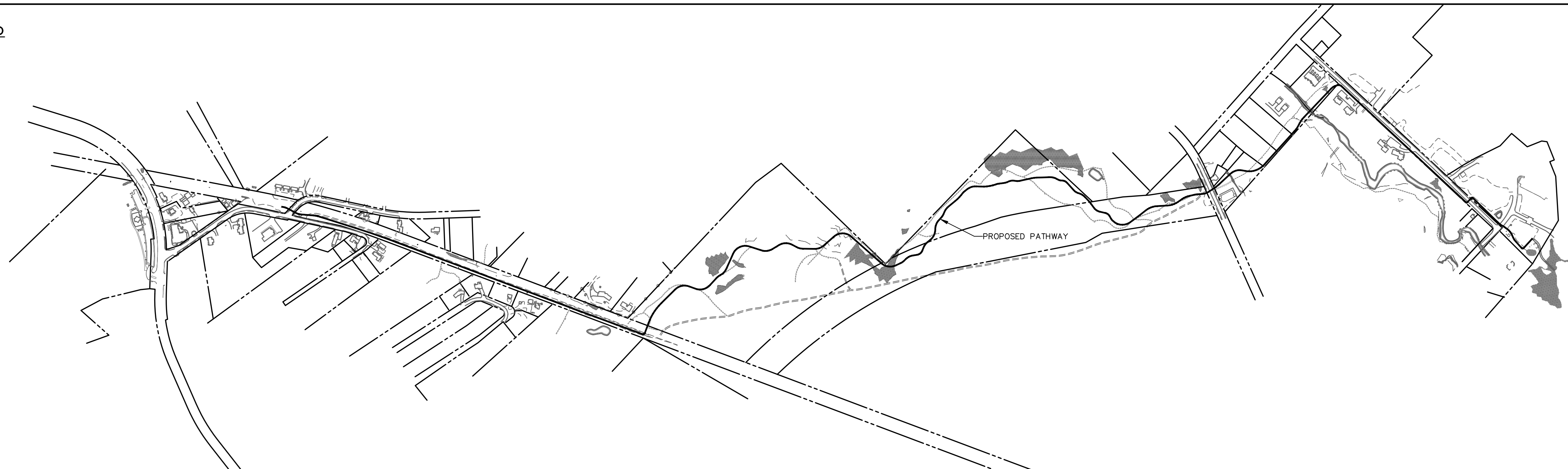
Issued: July 19, 2024

CO.01
SHEET 1 OF 40

2020-078B
Cover Sheet
MWVTA Multi-Use Pathway Phase II

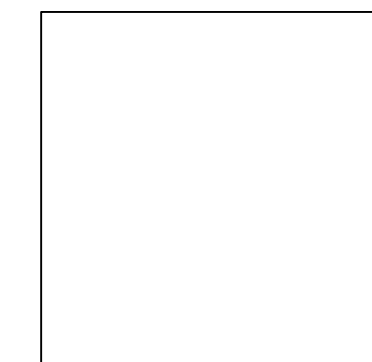


Vicinity Map
Scale: 1"=500'



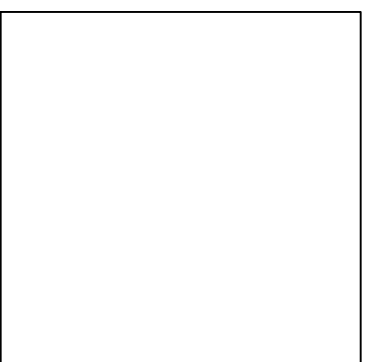
Client: Town of Conway
PO Box 2680
Conway, NH 03818

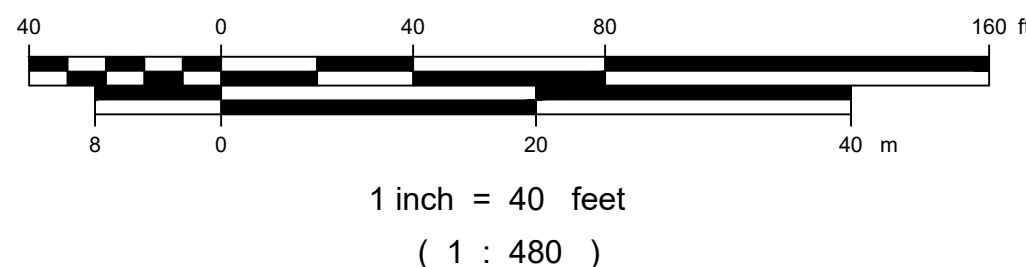
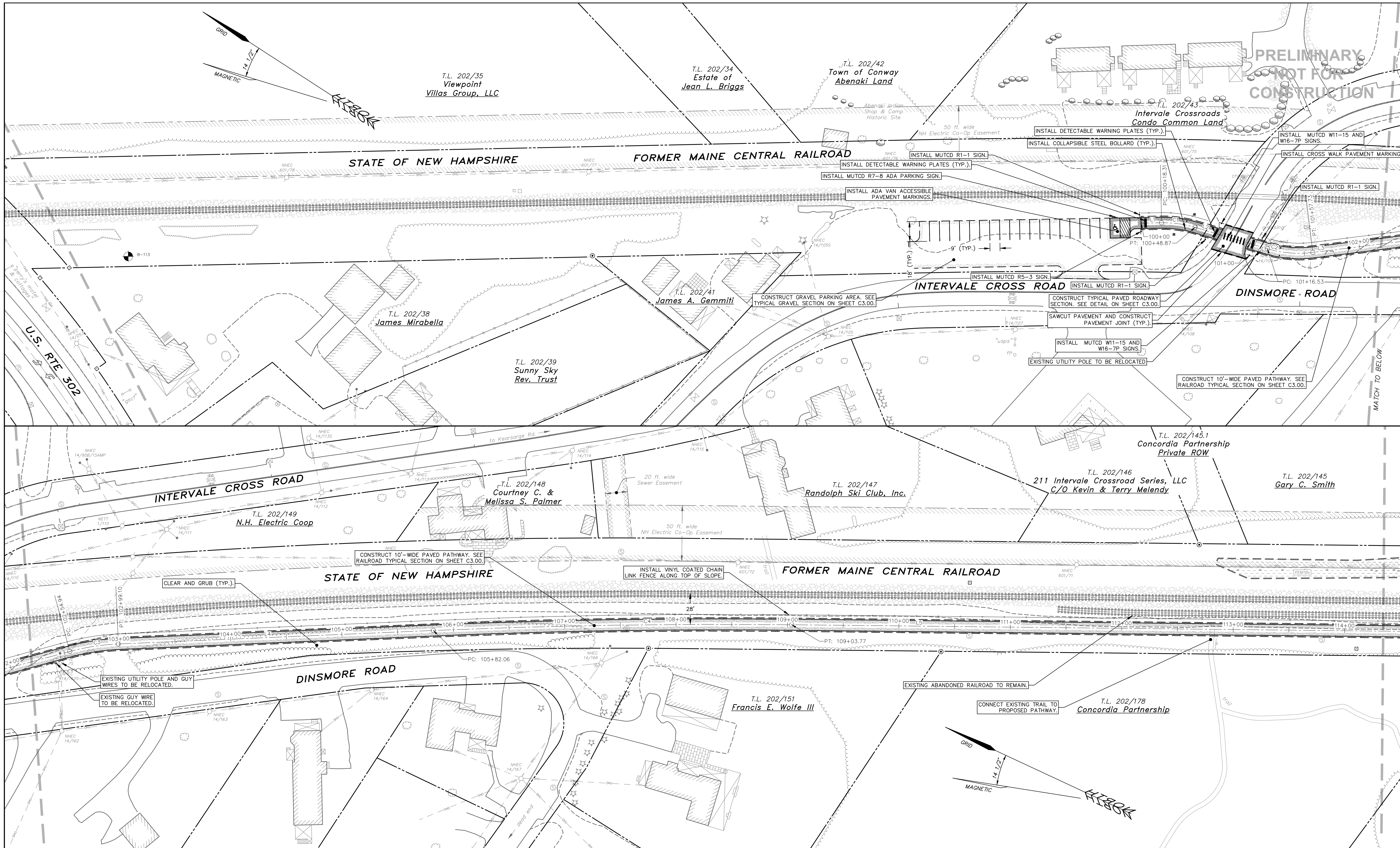
Engineer/Surveyor



HEB
ENGINEERS

PO Box 440, North Conway, NH 03860
(603) 356-6936 - www.hebengineers.com



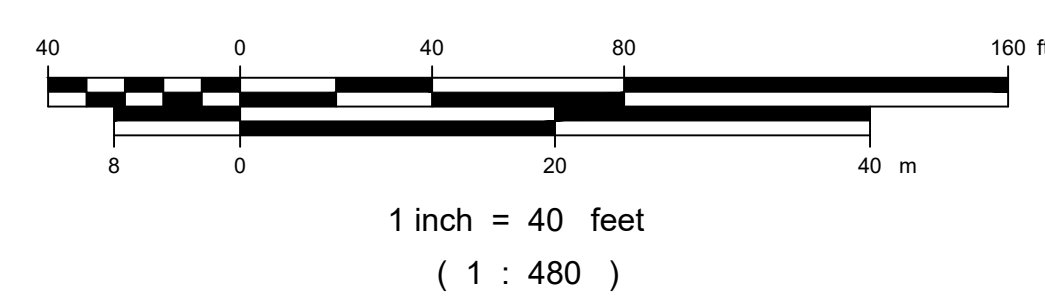
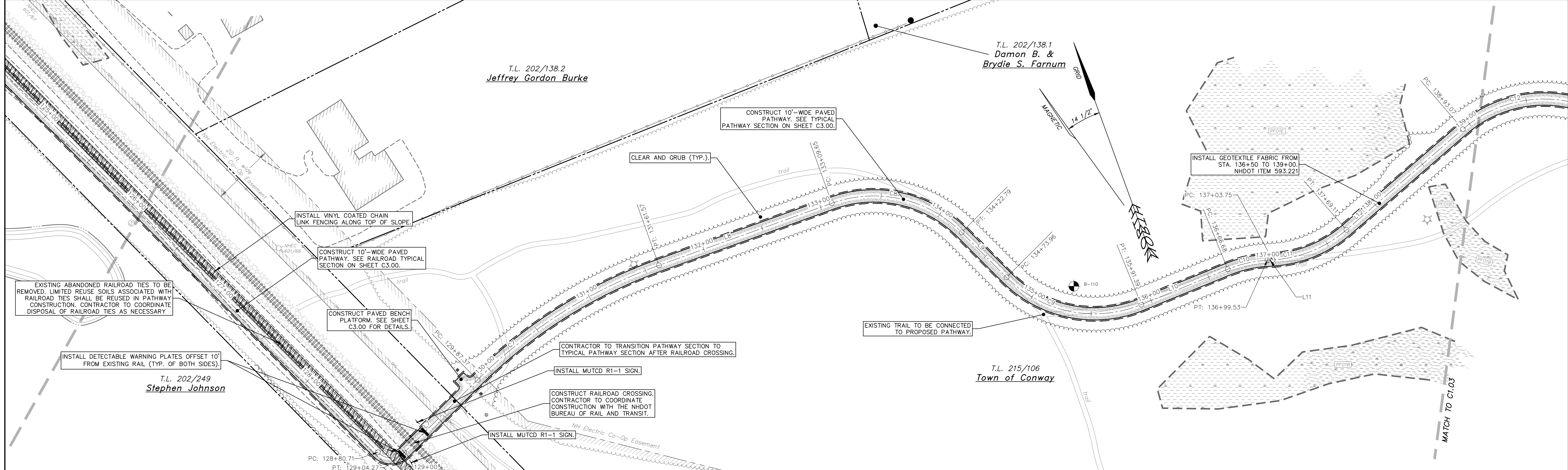
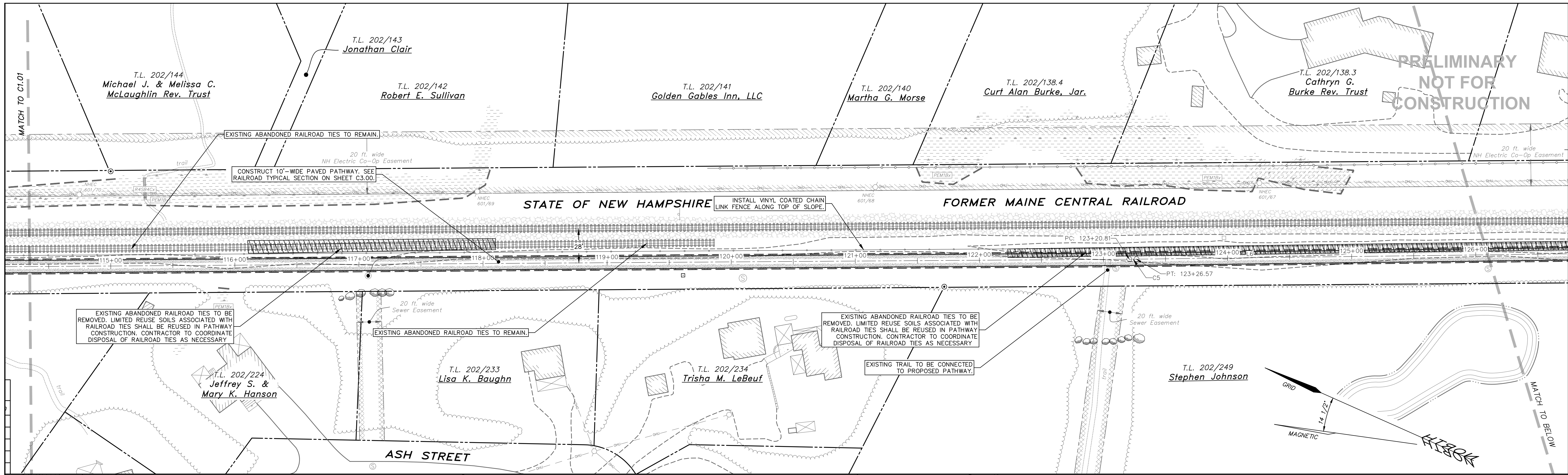


Copyright		2024		HEB Engineers, Inc.	
No.	Revision	DATE	BY		

HEB ENGINEERS
PO Box 440, North Conway, NH 03860
(603) 356-6936 - www.hebengineers.com

SURVEYED BY	DWI/MPM/JAD
DESIGNED BY	AML
DRAWN BY	AML
CHECKED BY	JMM
FIELD BOOK	375
SCALE	1"=40'
DATE	07/19/2024

Pathway Layout Plan (Sta. 100+00-114+50)
for the
MWVTA Multi-Use Pathway Phase II
located in and prepared for the
Town of Conway, New Hampshire



Copyright	2024	HEB Engineers, Inc.	
No.	Revision	DATE	BY

HEB ENGINEERS
PO Box 440, North Conway, NH 03860
(603) 356-6936 - www.hebengineers.com

SURVEYED BY	DWI/MPM/JAD
DESIGNED BY	AML
DRAWN BY	AML
CHECKED BY	JMM
FIELD BOOK	375
SCALE	1"=40'
DATE	07/19/2024

Pathway Layout Plan (Sta. 114+50-139+00)
for the
MWTA Multi-Use Pathway Phase II
located in and prepared for the
Town of Conway, New Hampshire

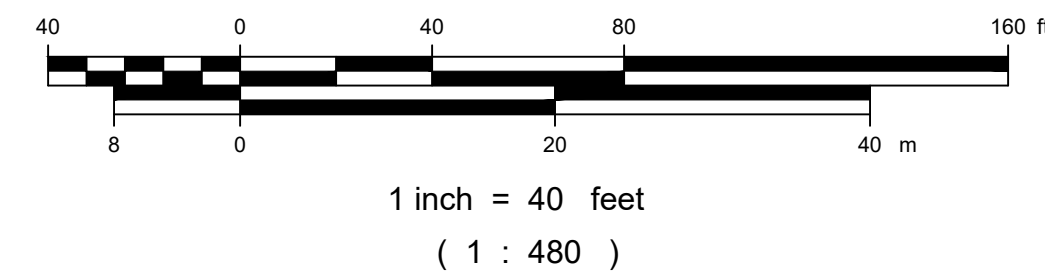
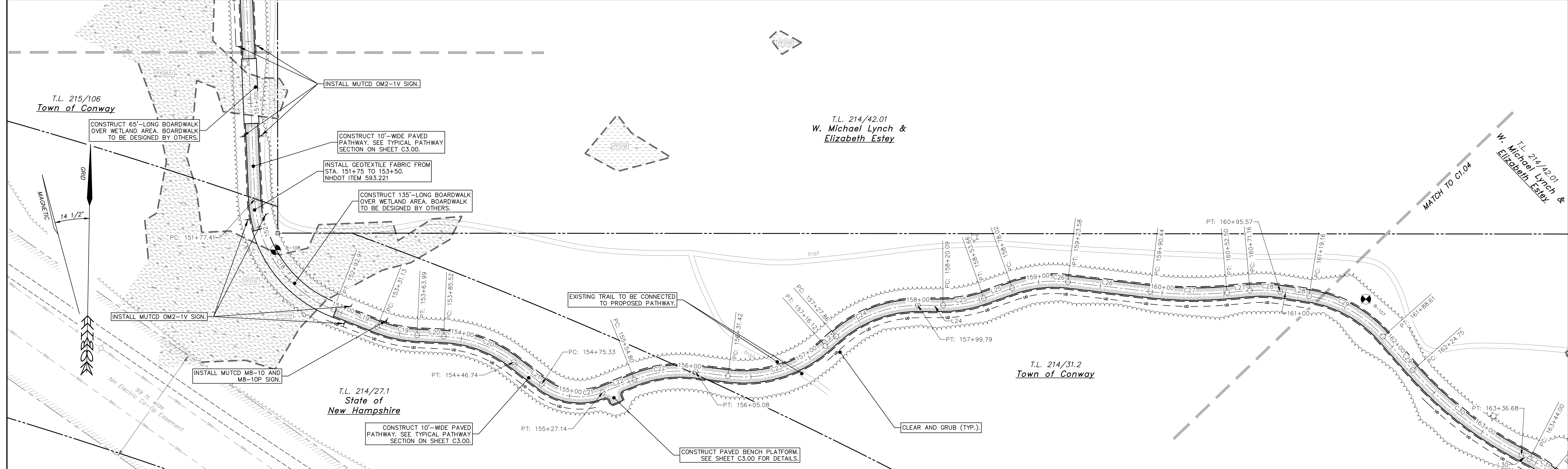
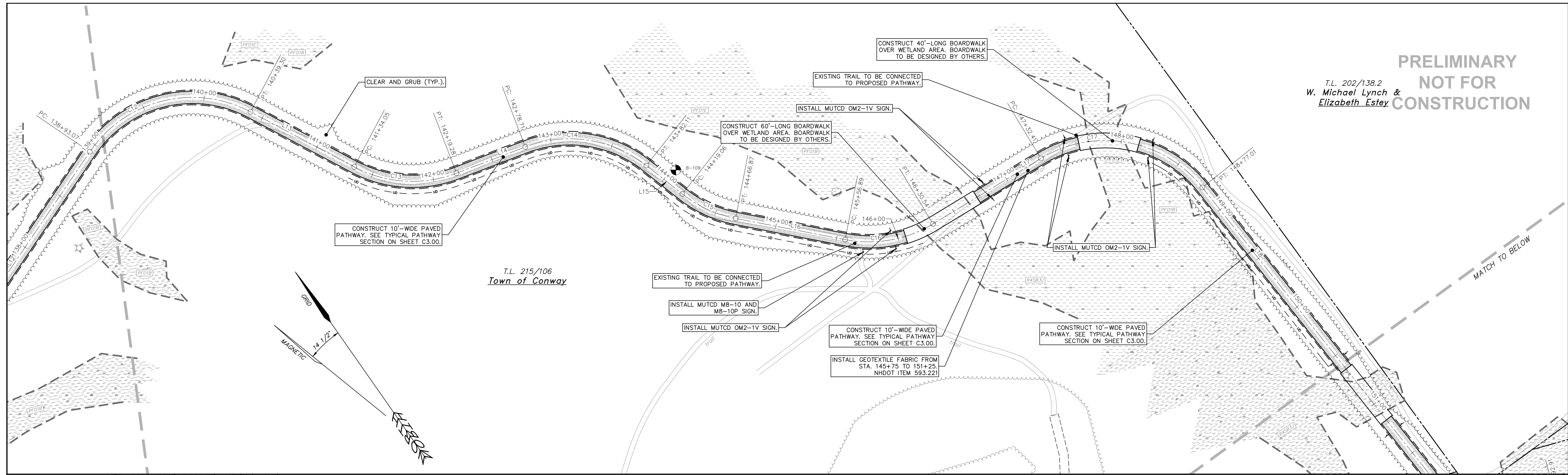
2020-078B
C1.02
SHEET 7 OF 40

**PRELIMINARY
NOT FOR
CONSTRUCTION**

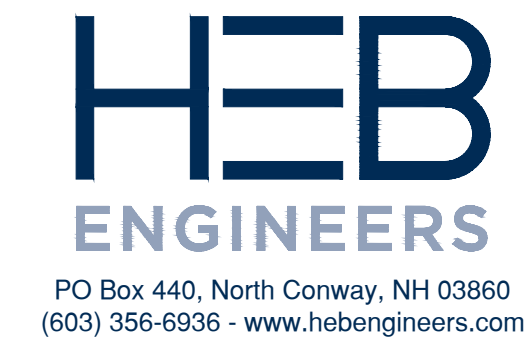
**PRELIMINARY
NOT FOR
CONSTRUCTION**

PRELIMINARY
NOT FOR
CONSTRUCTION

T.L. 202/138.2
W. Michael Lynch &
Elizabeth Estey



Copyright		2024		HEB Engineers, Inc.	
No.	Revision	DATE	BY		

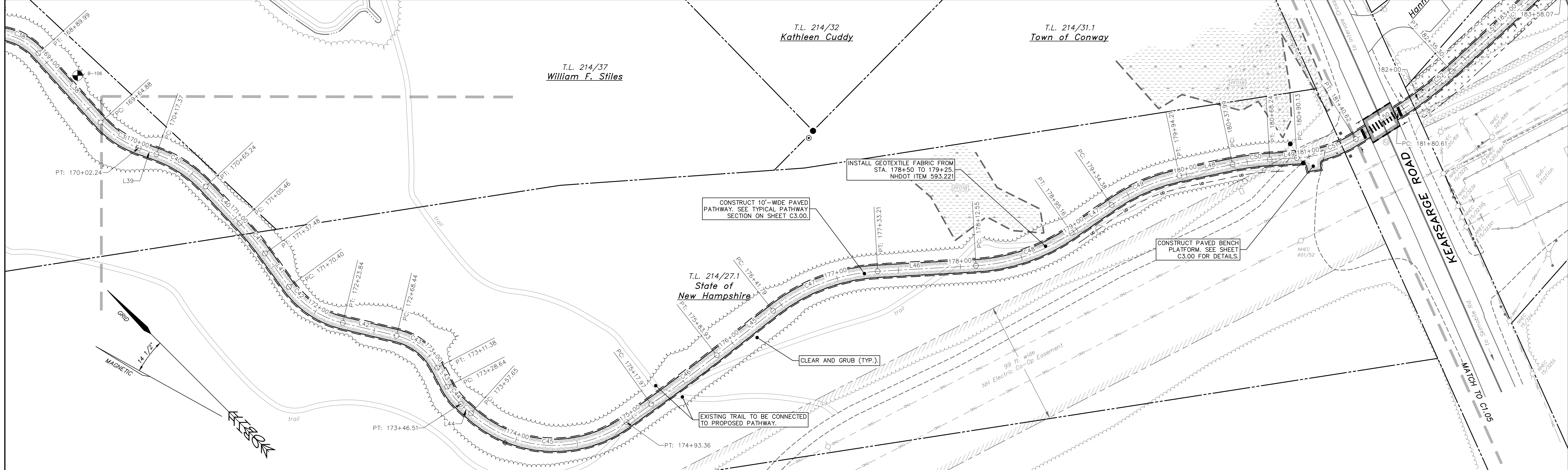
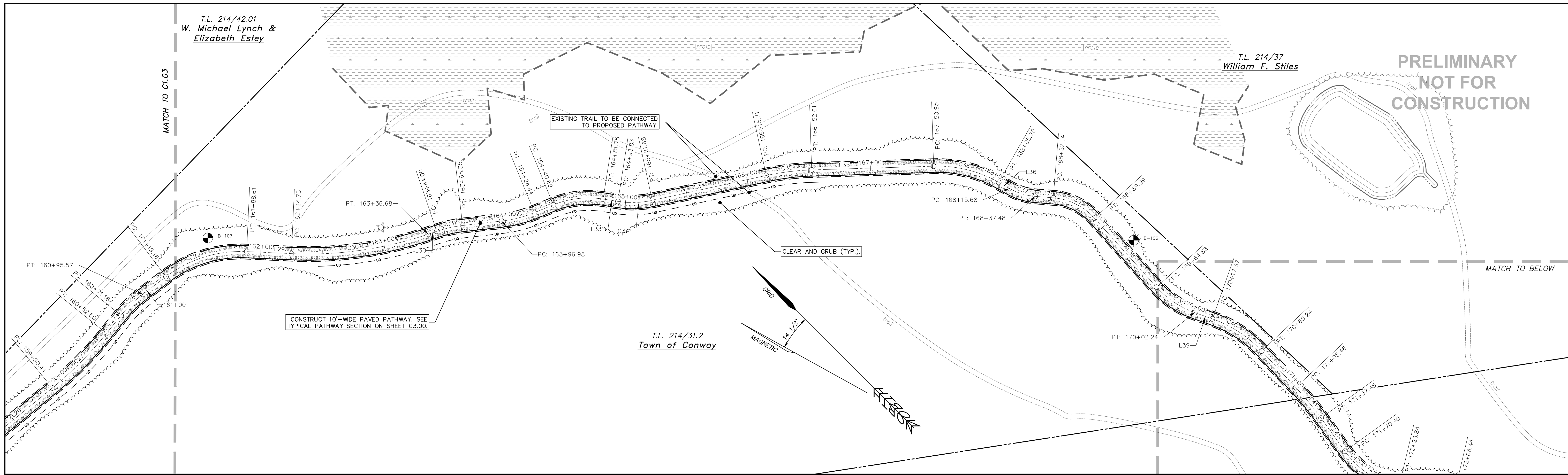


SURVEYED BY	DWI/MPM/JAD
DESIGNED BY	AML
DRAWN BY	AML
CHECKED BY	JMM
FIELD BOOK	375
SCALE	1"=40'
DATE	07/19/2024

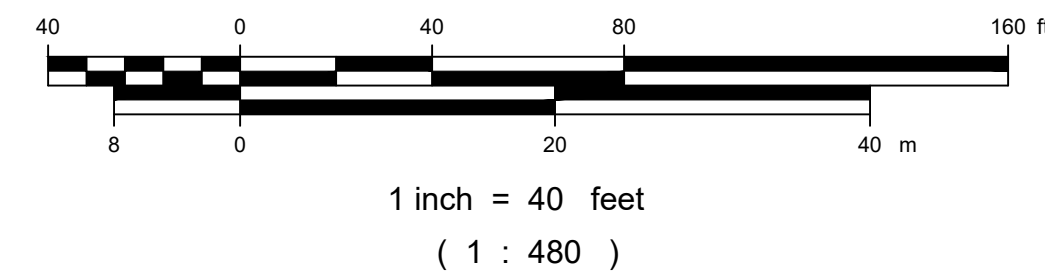
Pathway Layout Plan (Sta. 139+00-161+50)
for the
MWVTA Multi-Use Pathway Phase II
located in and prepared for the
Town of Conway, New Hampshire

2020-078B
C1.03
SHEET 8 OF 40

Published: 2024-07-19 09:00:00 AM
 Project: 2020-078B - MWVTA Multi-Use Pathway Phase II
 Drawing: Pathway Layout Plan (Sta. 139+00-161+50) - C1.03
 Author: W. Michael Lynch & Elizabeth Estey
 Designer: W. Michael Lynch & Elizabeth Estey
 Checker: JMM
 Date: 07/19/2024



PRELIMINARY
NOT FOR
CONSTRUCTION



Copyright	2024	HEB Engineers, Inc.	
No.	Revision	DATE	BY

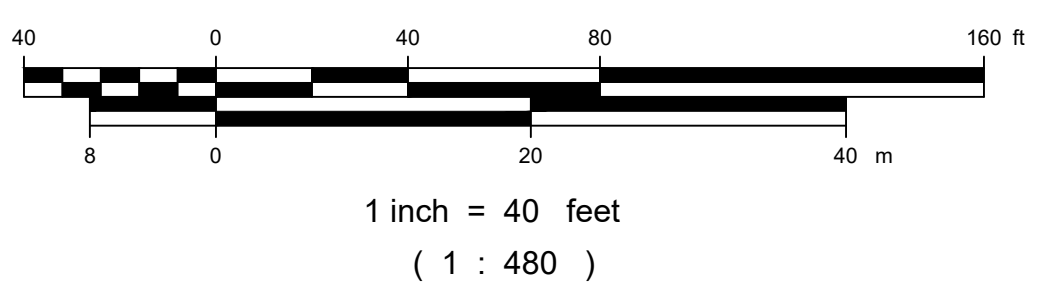
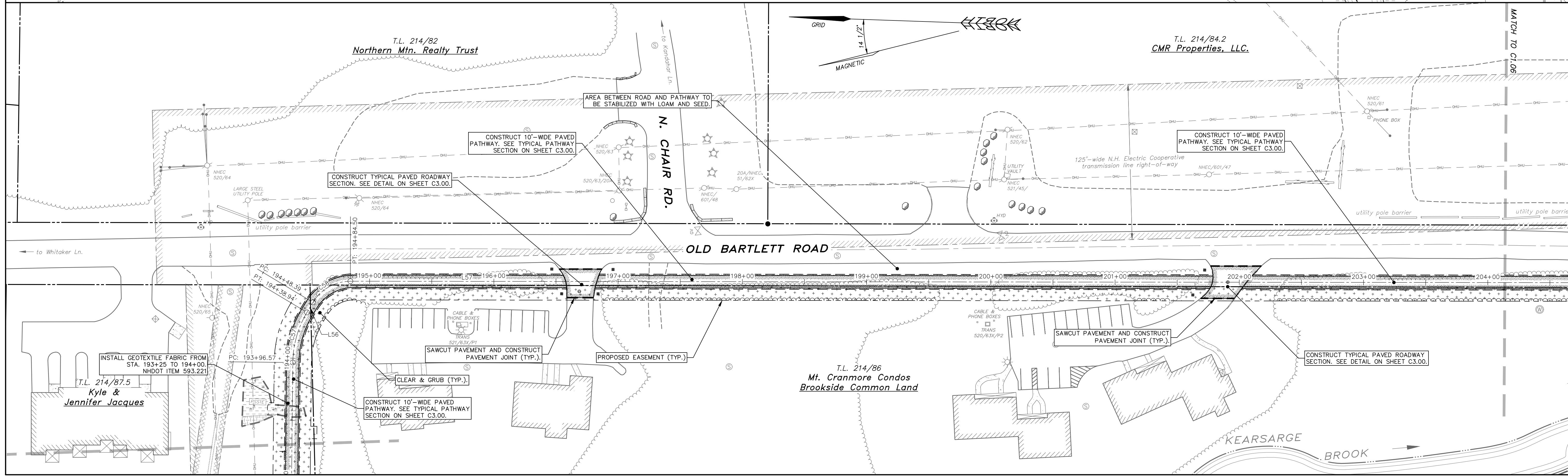
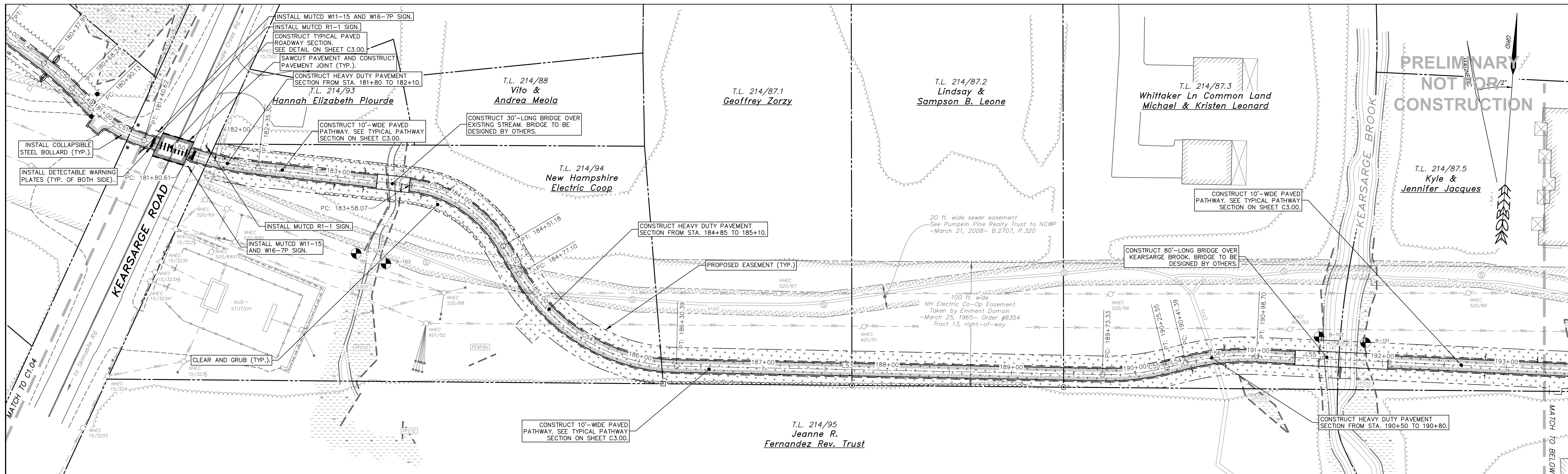
HEB
ENGINEERS
PO Box 440, North Conway, NH 03860
(603) 356-6936 - www.hebengineers.com

SURVEYED BY	DWI/MPM/JAD
DESIGNED BY	AML
DRAWN BY	AML
CHECKED BY	JMM
FIELD BOOK	375
SCALE	1"=40'
DATE	07/19/2024

Pathway Layout Plan (Sta. 161+50-181+50)
for the
MWVTA Multi-Use Pathway Phase II
located in and prepared for the
Town of Conway, New Hampshire

2020-078B
C1.04
SHEET 9 OF 40

Published: 07/19/2024 09:08:00 AM
 Conway - MWVTA Multi-Use Pathway Phase II - Preliminary Design/Sheet/Field/C1.04 Pathway Layout Plan.dwg, C1.04_17182024.dwg, 4/17/24, jmm



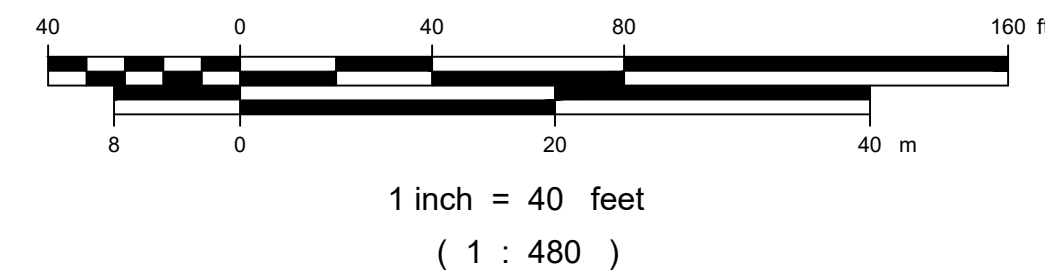
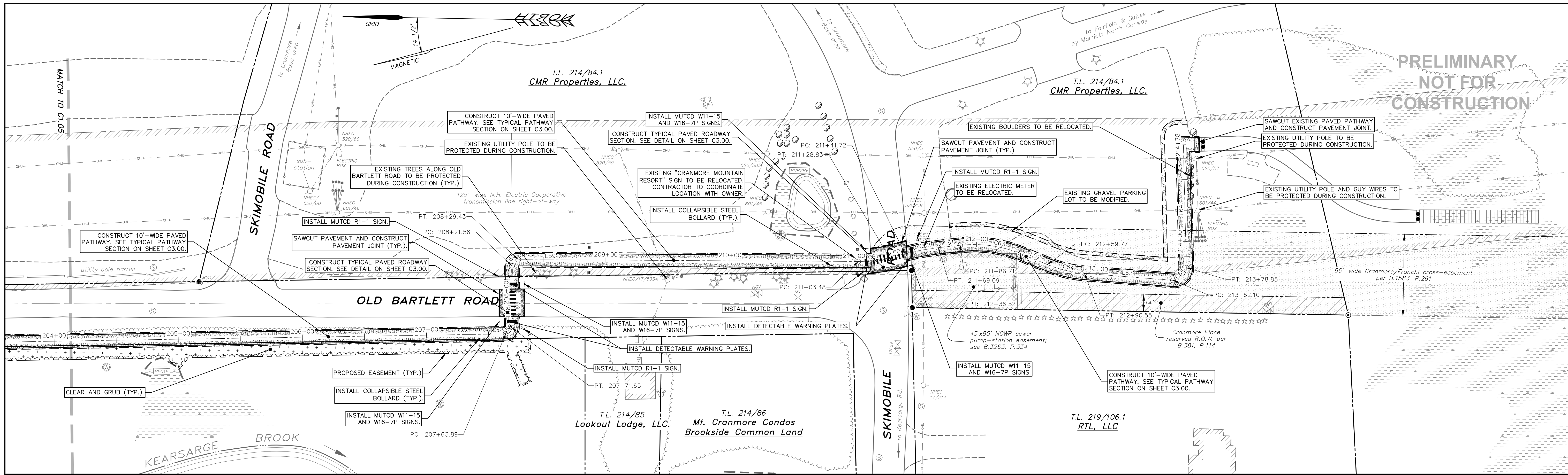
Copyright	2024	HEB Engineers, Inc.	
No.	Revision	DATE	BY



SURVEYED BY	DW/MPM/JAD
DESIGNED BY	AML
DRAWN BY	AML
CHECKED BY	JMM
FIELD BOOK	375
SCALE	1" = 40'
DATE	07/19/2024

Pathway Layout Plan (Sta. 181+50-204+00)
for the
MWTA Multi-Use Pathway Phase II
located in and prepared for the
Town of Conway, New Hampshire

2020-0788B
C1.05
SHEET 10 OF 40



Copyright	2024	HEB Engineers, Inc.	
No.	Revision	DATE	BY

HEB ENGINEERS
PO Box 440, North Conway, NH 03860
(603) 356-6936 - www.hebengineers.com

SURVEYED BY	DWI/MPM/JAD
DESIGNED BY	AML
DRAWN BY	AML
CHECKED BY	JMM
FIELD BOOK	375
SCALE	1"=40'
DATE	07/19/2024

Pathway Layout Plan (Sta. 204+00-214+78)
for the
MWVTA Multi-Use Pathway Phase II
located in and prepared for the
Town of Conway, New Hampshire

2020-078B
C1.06
SHEET 11 OF 40