



SELECT BOARD MEETING

**MWVTA MULTI-USE PATHWAY
PHASE II**

Tuesday, May 28, 2024

Josh McAllister, PE
Director of Civil Engineering
HEB Engineers, Inc.

Aaron Lamar, EIT
Junior Civil Engineer
HEB Engineers, Inc.

WHY ARE WE HERE?

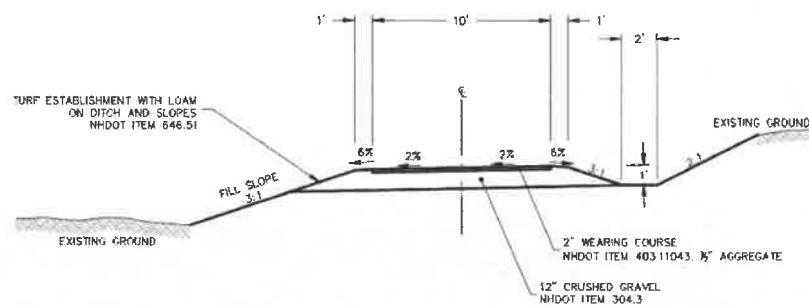
Provide a general overview of the project

Discuss previous design, critical features, and considerations for design

Receive input from the Board of Selectmen

PREVIOUS DESIGN

- » ADA Accessibility
- » Boardwalks & Bridges
- » Typical section



Typical Pathway Section

Scale: 1" = 5'

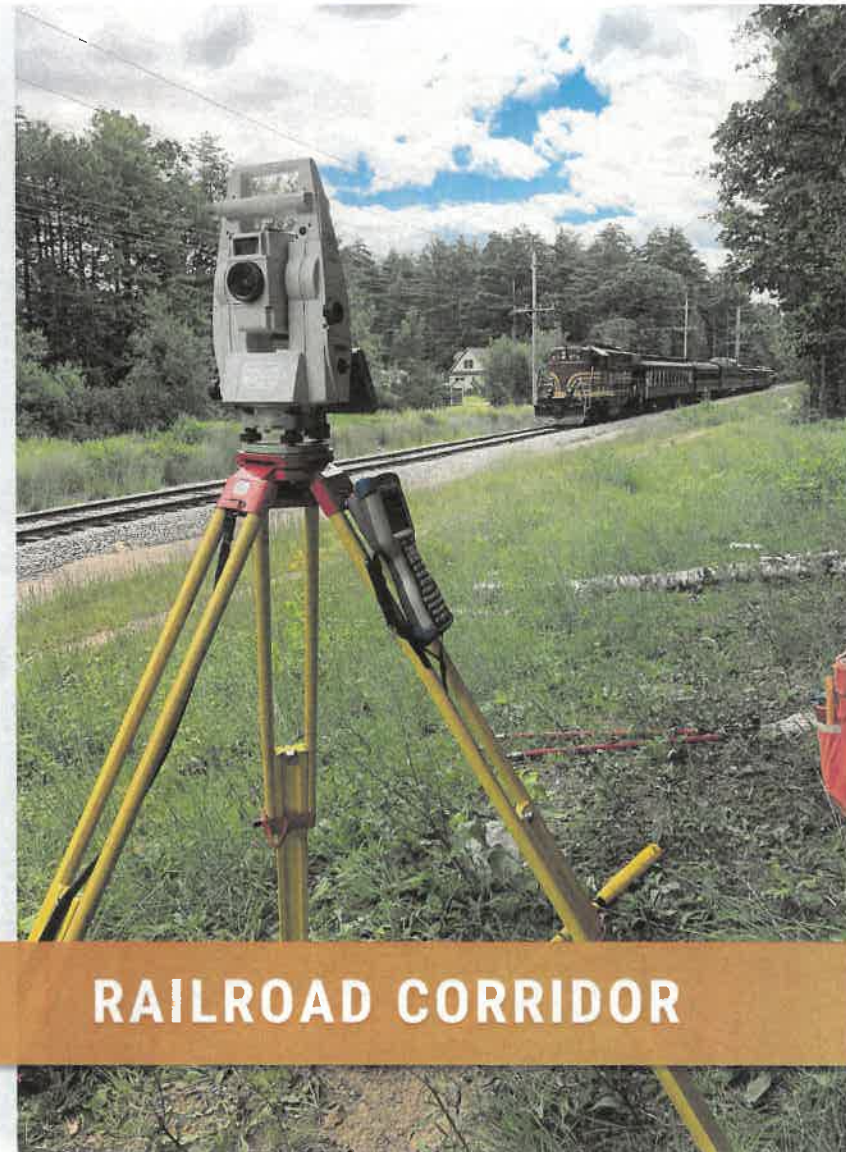
PROJECT LIMITS

CRANMORE
MOUNTAIN TO
INTERVALE SCENIC
VISTA AREA



CRITICAL FEATURES EXISTING CONDITIONS

- » Pathway will run parallel with the railroad corridor
- » Typical section modified to comply with rail trail section design criteria
- » Anticipated to end at intersection with Intervale Crossroad or at the Scenic Vista
- » HEB analyzing feasibility of extending to Scenic Vista via tunnel under Route 16



RAILROAD CORRIDOR

CRITICAL FEATURES EXISTING CONDITIONS

- » Steep Slopes
- » Wetlands
- » Consistency with previous design



WHITAKER WOODS

CRITICAL FEATURES EXISTING CONDITIONS

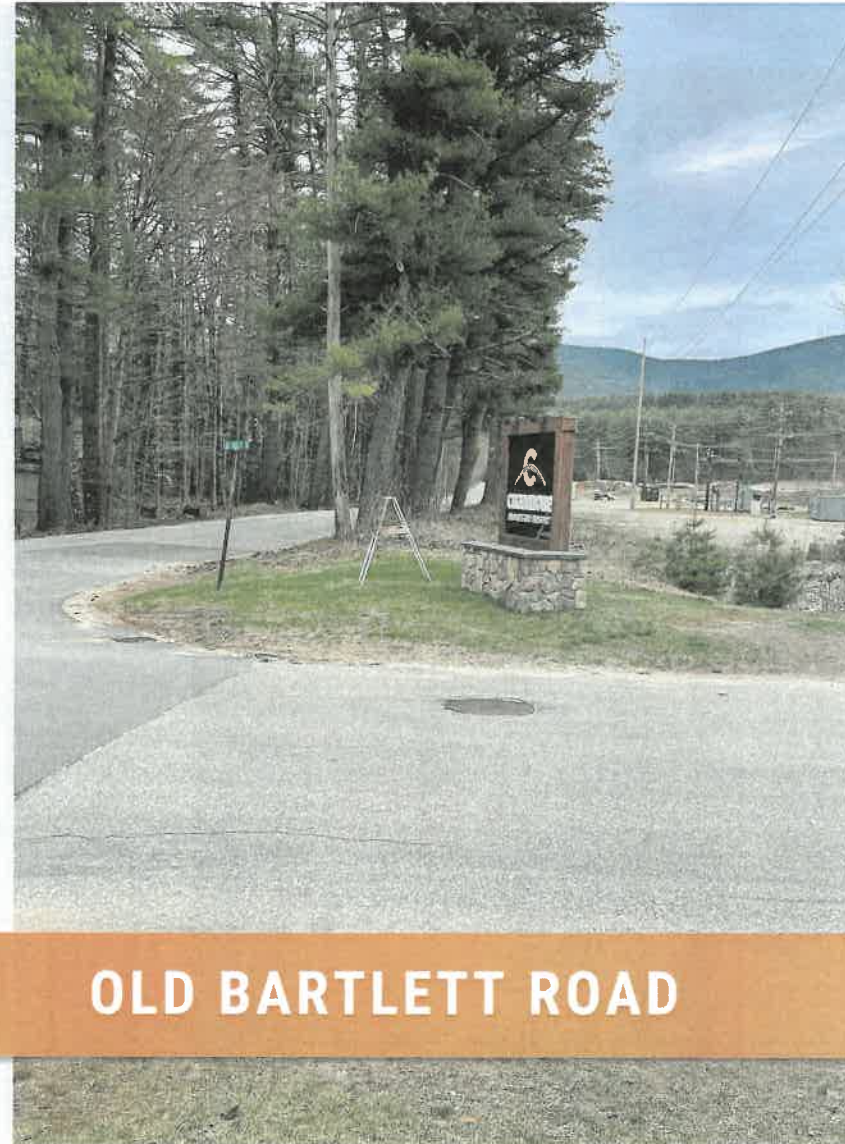
- » Pathway crosses Kearsarge Road to access Utility Corridor
- » Pathway follows existing Utility Corridor
- » Two stream crossings
 - Provide adequate flood capacity and protection



POWER LINES

CRITICAL FEATURES EXISTING CONDITIONS

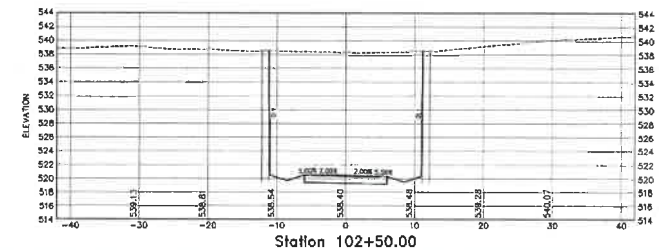
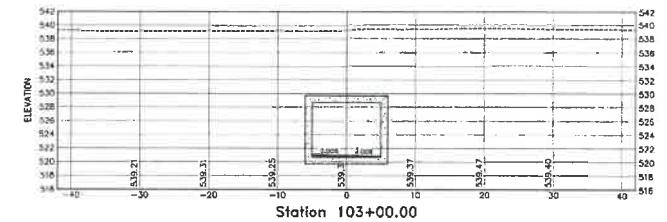
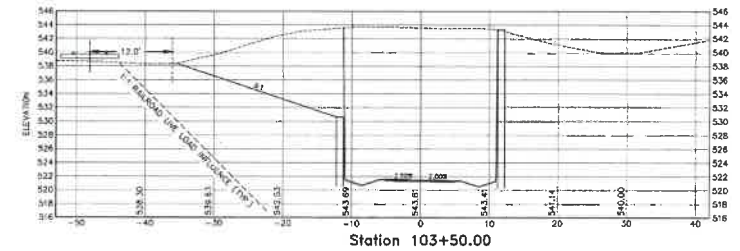
- » Mature trees
- » Road and driveway crossings
- » Runs parallel with Old Bartlett Road
- » Ties into terminus of Phase 1
- » Abutters concerns



OLD BARTLETT ROAD

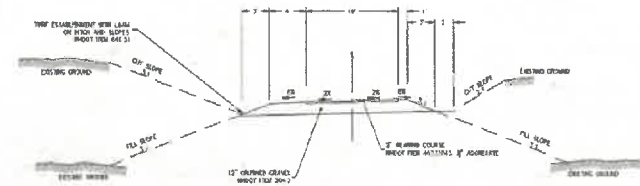
PROPOSED CONSIDERATIONS ROUTE 16 CROSSING

» Potential Tunnel under U.S. Route 302 /
N.H. Route 16

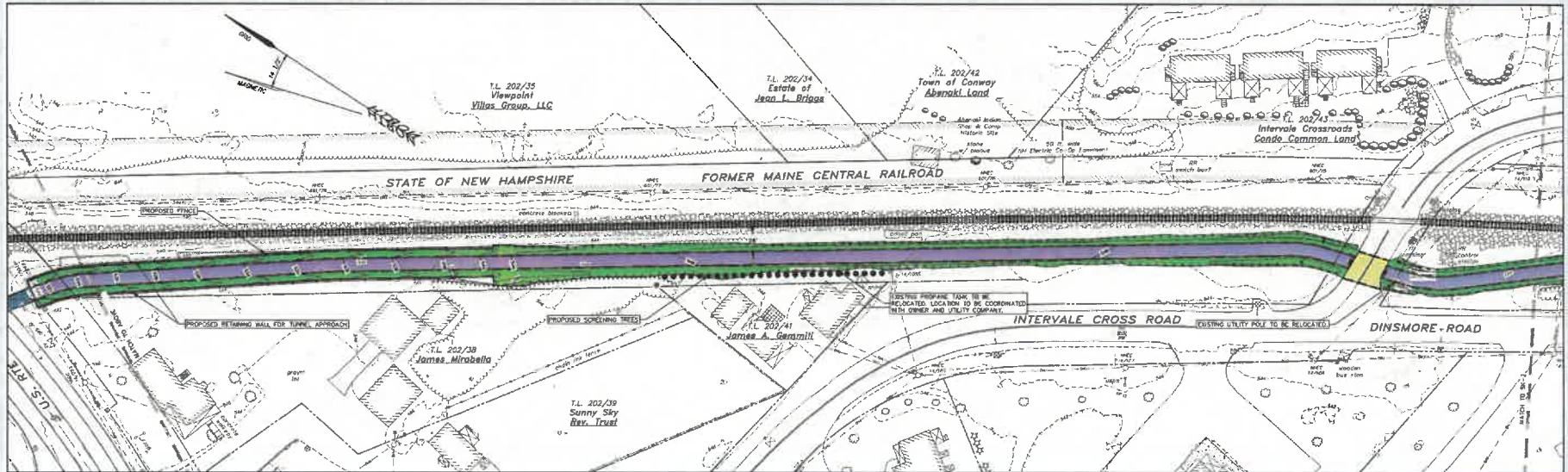


PROPOSED CONSIDERATIONS ROUTE 16 APPROACH

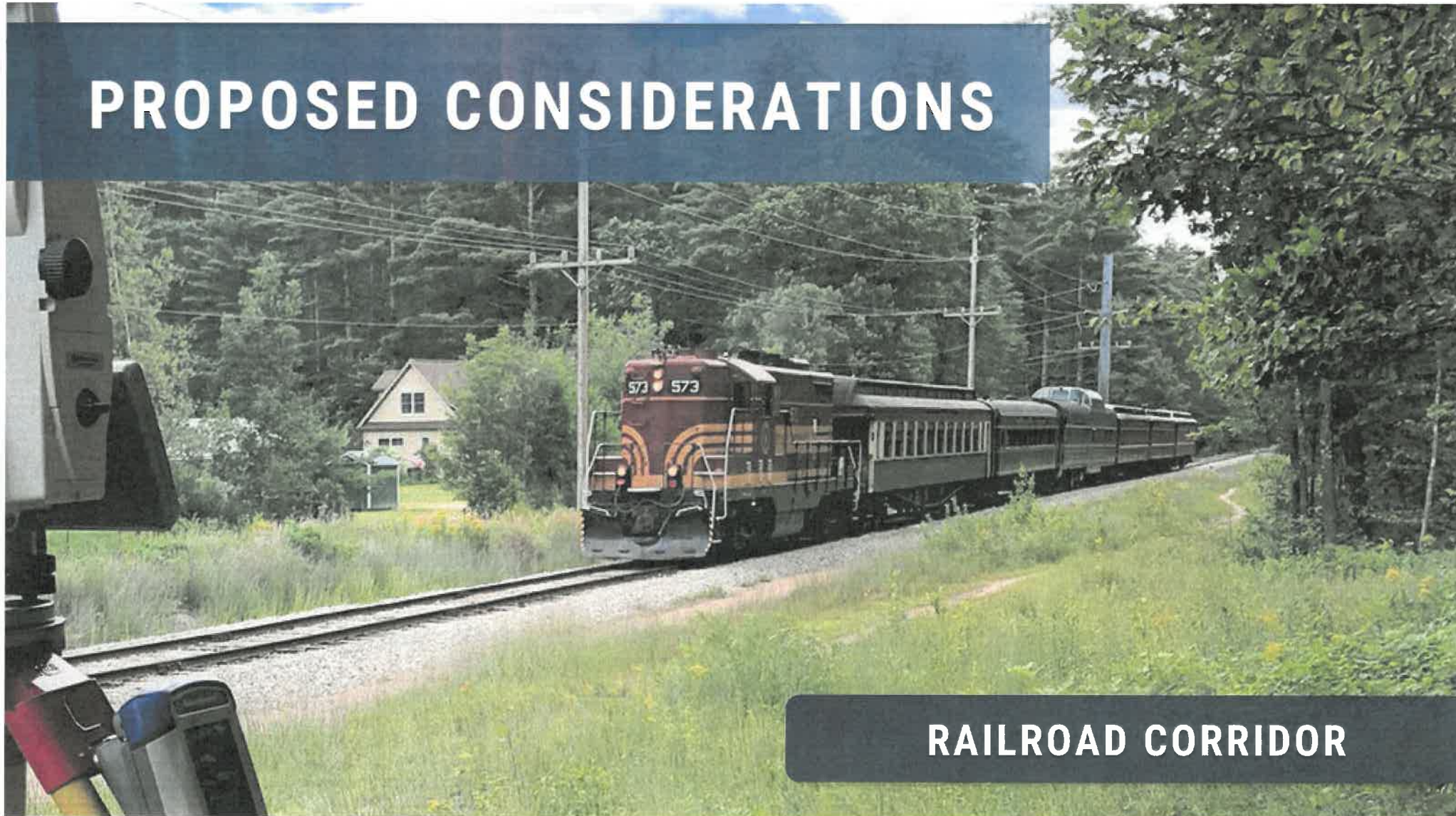
- » **Railroad Typical Section**
 - Modified typical section to comply with railroad requirements
- » **Tunnel Approach**
- » **Retaining Walls**



Typical Pathway Section - Railroad Corridor
Scale 1" = 5'



PROPOSED CONSIDERATIONS

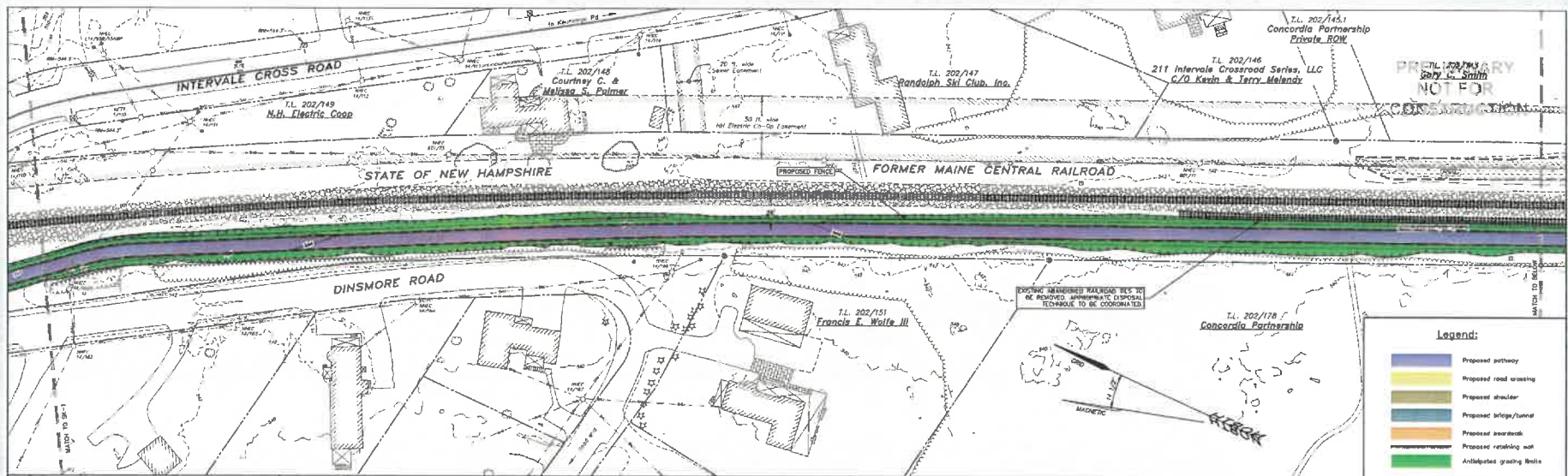


RAILROAD CORRIDOR

PROPOSED CONSIDERATIONS RAILROAD CORRIDOR

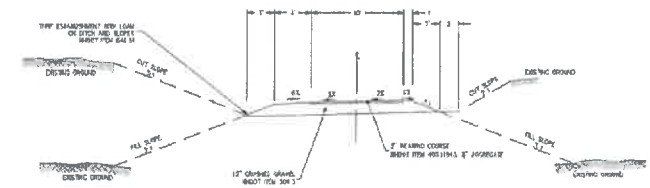


- » **Railroad Typical Section**
 - Modified typical section to comply with railroad requirements
- » **Abandoned Railroad Ties**
 - Environmental concerns

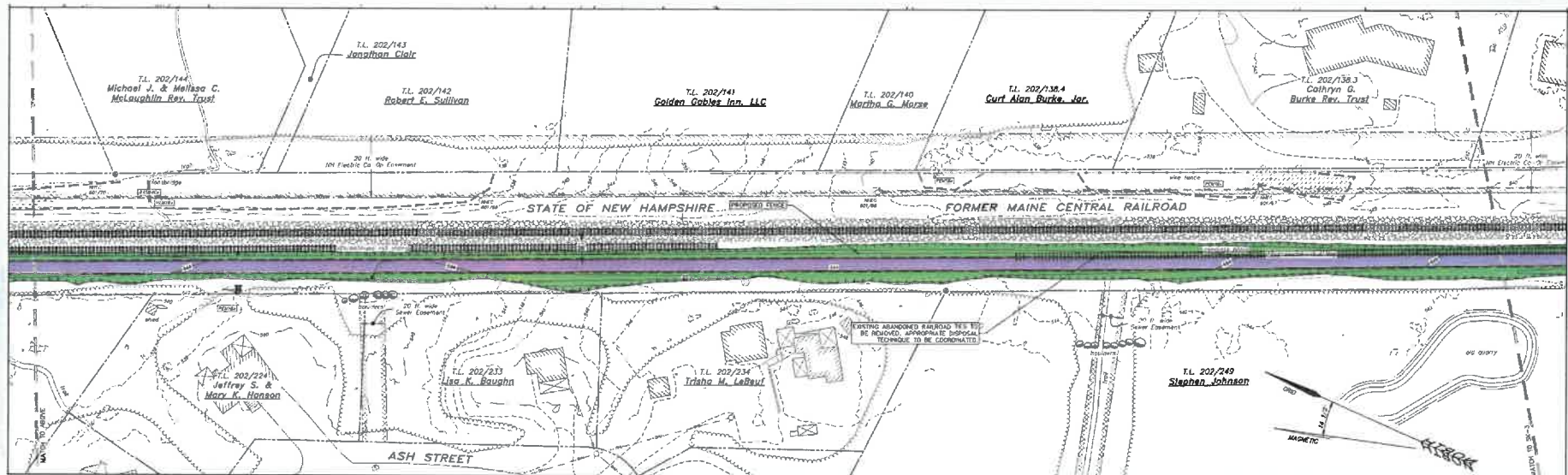


PROPOSED CONSIDERATIONS RAILROAD CORRIDOR

- » **Railroad Typical Section**
 - Modified typical section to comply with railroad requirements
- » **Abandoned Railroad Ties**



Typical Pathway Section - Railroad Corridor
Scale 1" = 5'



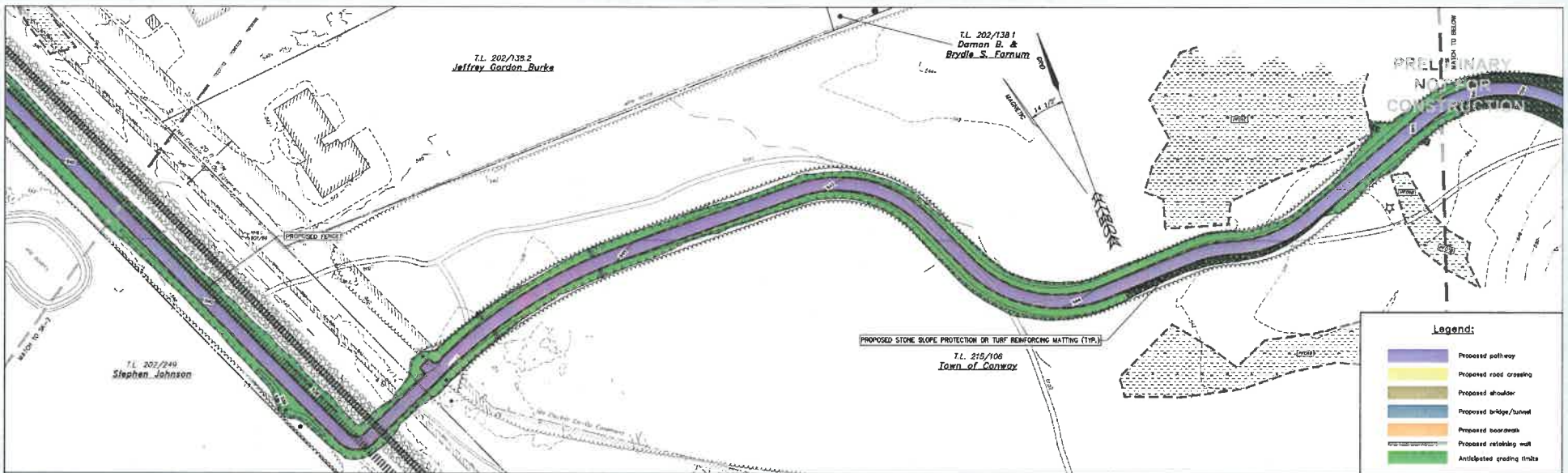
A photograph of a forest stream with snow patches and a dark blue text overlay. The stream flows through a wooded area with many trees, some of which are bare, suggesting a late autumn or winter setting. The ground is covered with fallen leaves and patches of snow. The text "PROPOSED CONSIDERATIONS" is overlaid in white on a dark blue background at the top of the image.

PROPOSED CONSIDERATIONS

WHITAKER WOODS

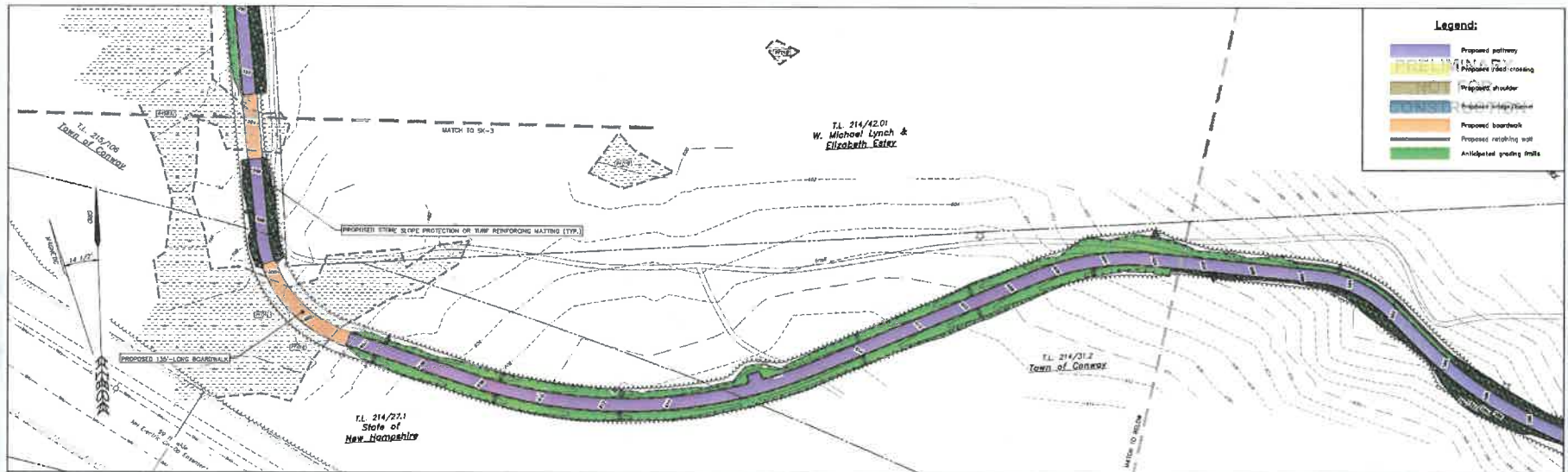
PROPOSED CONSIDERATIONS WHITAKER WOODS

- » Railroad Crossing
- » Routed pathway to avoid wetland impacts
 - Follows perimeter trail where possible



PROPOSED CONSIDERATIONS WHITAKER WOODS

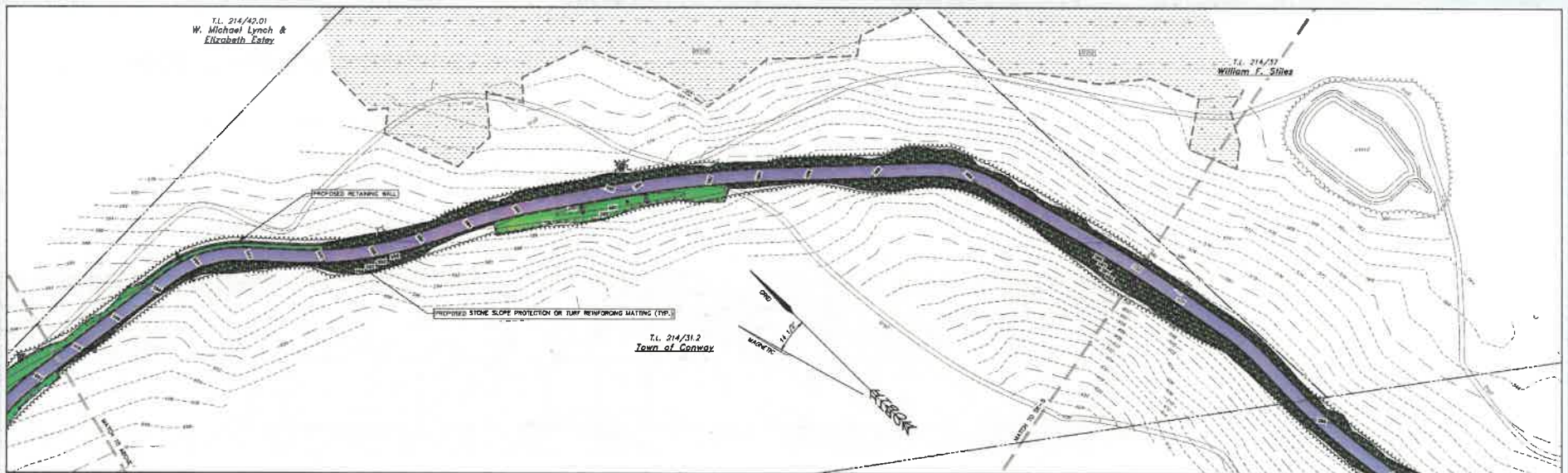
- » Avoid abutter impacts
- » Braided Trail
 - Blends with existing trailways, creating multiple pathway routes



PROPOSED CONSIDERATIONS WHITAKER WOODS

» Steep Slope Section

- Modified typical section starting at Station 175+00 to mitigate grading impacts.
- Stone slope protection / Turf Reinforcing Mat
- Approximately 160' long by 6' high retaining wall on downhill side

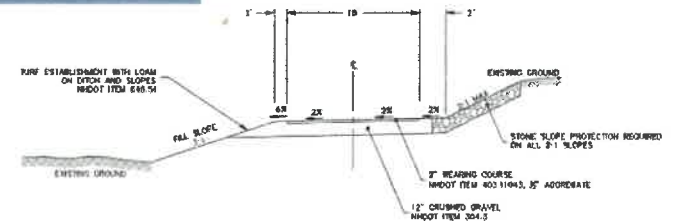


PROPOSED CONSIDERATIONS WHITAKER WOODS

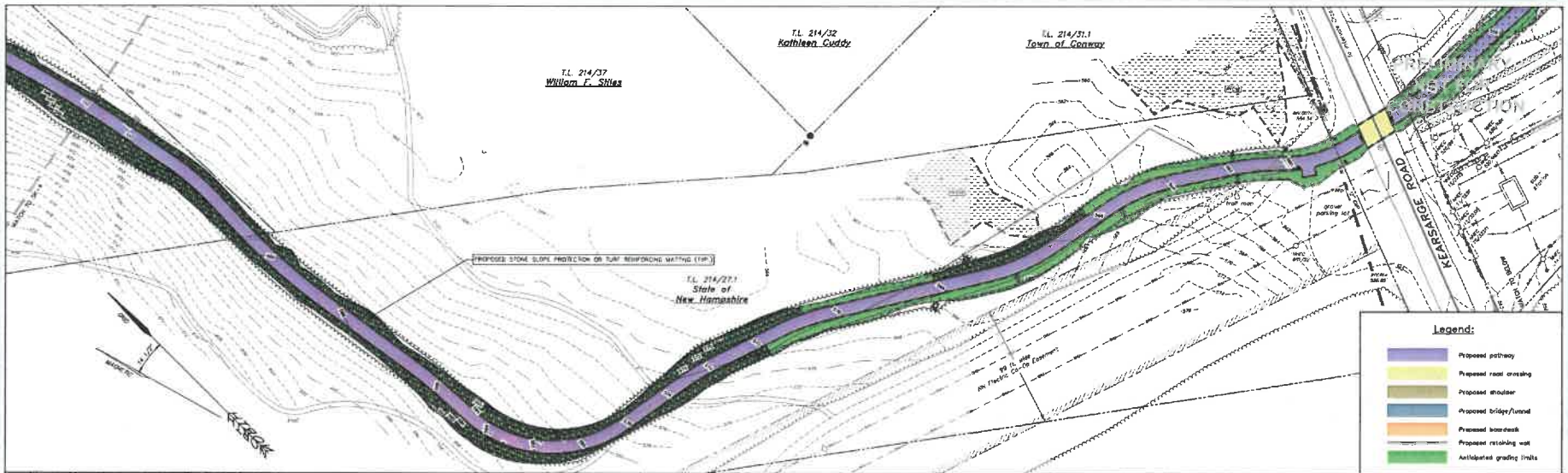
» Steep slope section

- Modified typical section ends at Station 187+50
- Stone slope protection / Turf reinforcing matting

» Minor Wetland Impacts



Typical Pathway Section (Sta. 175+00-187+50)
Scale: 1" = 5'



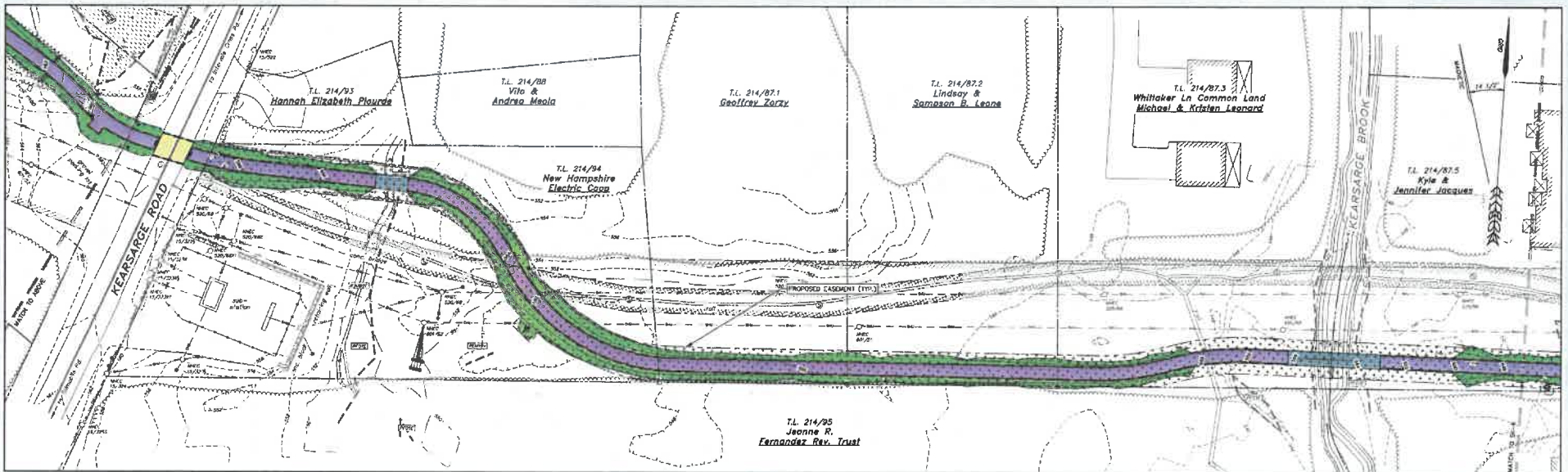
PROPOSED CONSIDERATIONS



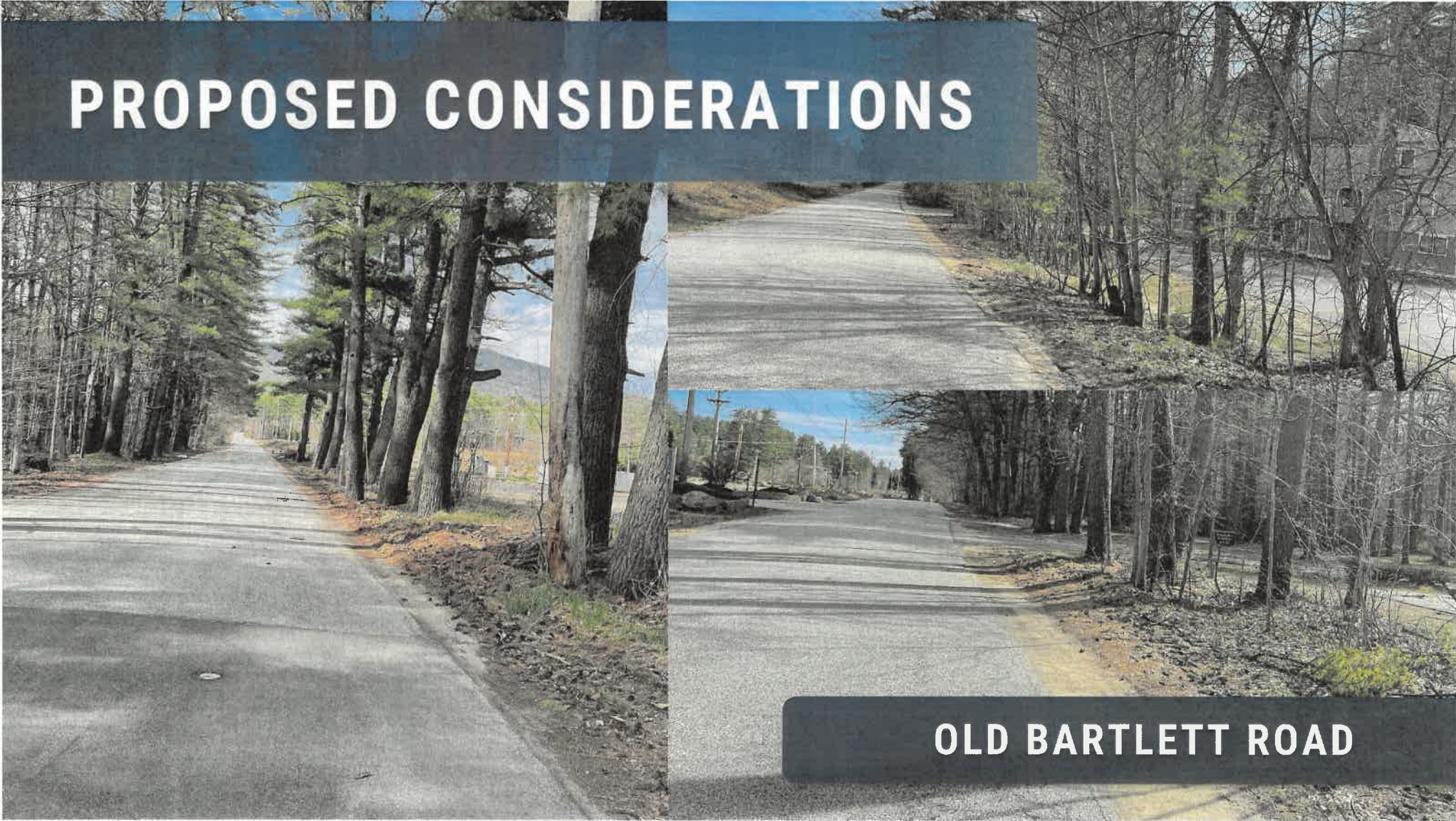
UTILITY CORRIDOR

PROPOSED CONSIDERATIONS UTILITY CORRIDOR

- » Crossing at Kearsarge Road
- » Utility Corridor
 - Coordination with Utility Companies
 - Coordination with abutters
- » Two Bridges
 - Style to match Phase 1



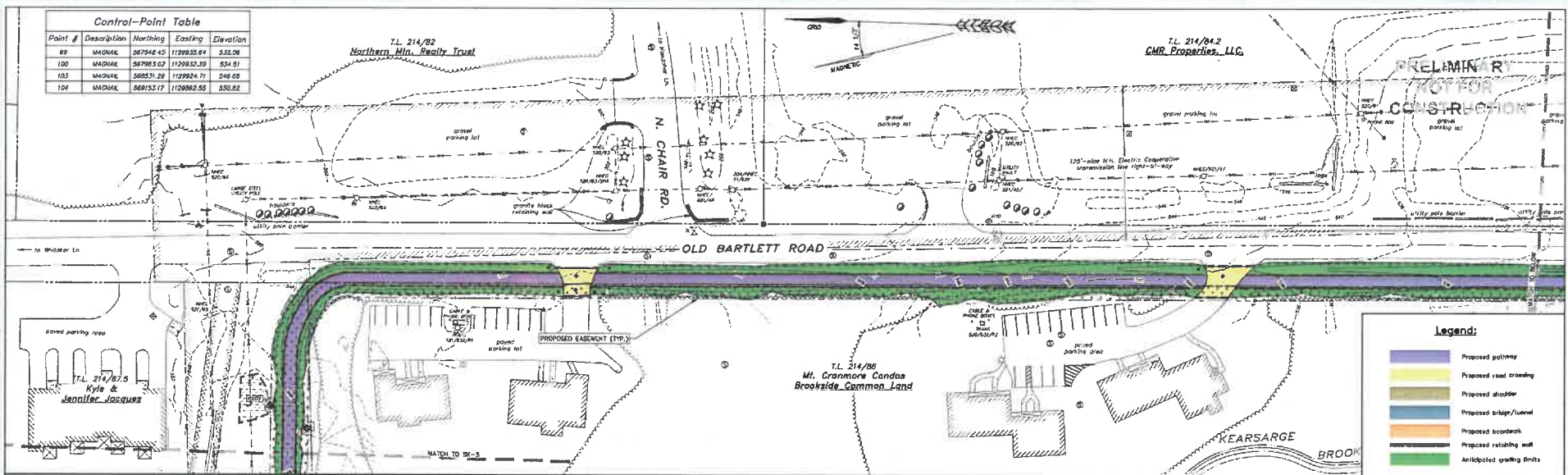
PROPOSED CONSIDERATIONS



OLD BARTLETT ROAD

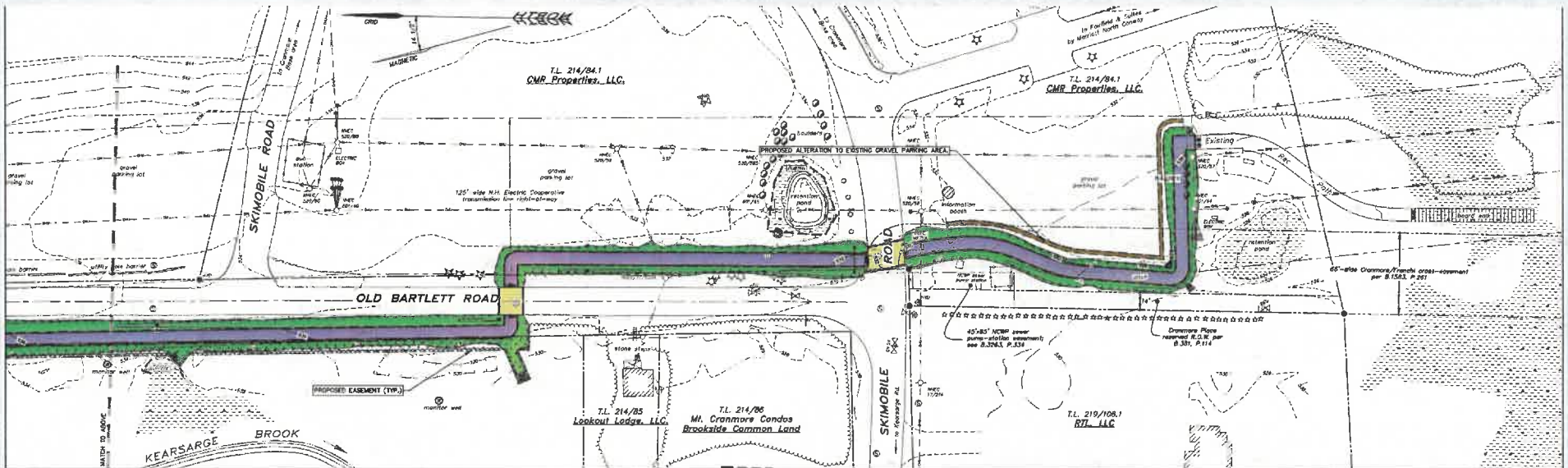
PROPOSED CONSIDERATIONS OLD BARTLETT ROAD

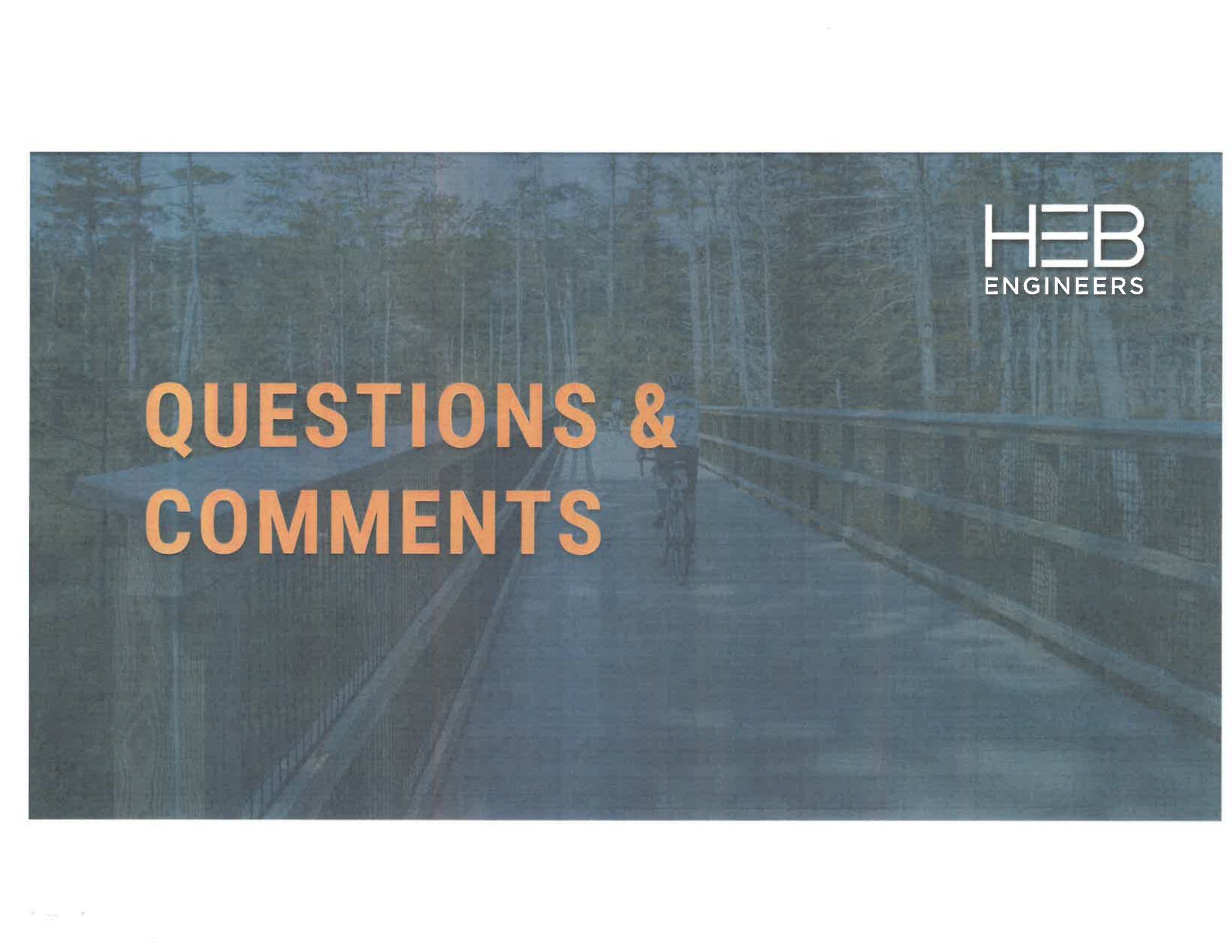
- » Potential easements
 - Coordinate with Condo Association and Cranmore Mountain Resorts
- » Mature trees
- » Driveway crossings



PROPOSED CONSIDERATIONS OLD BARTLETT ROAD

- » Potential easements
- » Mature trees
- » Driveway / Road crossings
- » Connection to Phase 1



A person is riding a bicycle on a wooden bridge that spans across a dense forest. The bridge has a wooden railing and a paved path. The scene is captured in a blue-tinted, slightly desaturated style. The text 'HEB ENGINEERS' is located in the top right corner, and 'QUESTIONS & COMMENTS' is written in large orange letters across the middle of the bridge.

HEB
ENGINEERS

QUESTIONS & COMMENTS

FEEDBACK?

HEB
ENGINEERS

CONTACT:

Josh McAllister, PE
HEB Engineers, Inc.
(603) 356-6936
jmcallister@hebengineers.com



