

Design Drawings

for the

MWVTA Multi-Use Pathway Phase II

located in and prepared for the

Town of Conway, New Hampshire

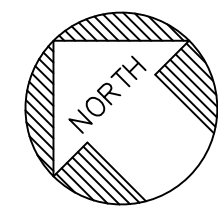
EDA Award # 01-79-15335

HEB Project # 2020-078B

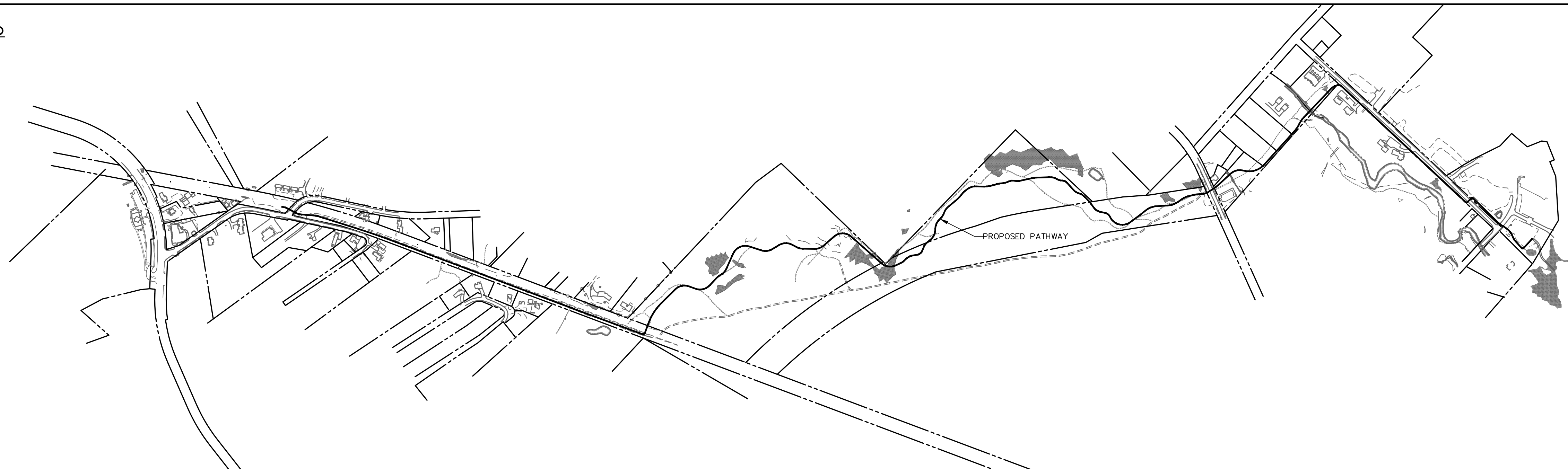
Issued: July 19, 2024

CO.01
SHEET 1 OF 40

2020-078B
Cover Sheet
MWVTA Multi-Use Pathway Phase II

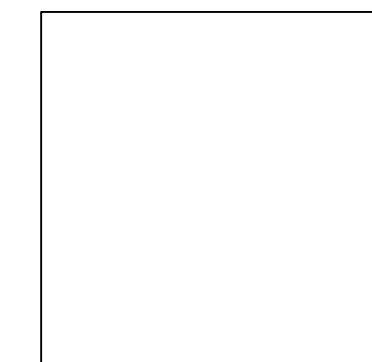


Vicinity Map
Scale: 1"=500'



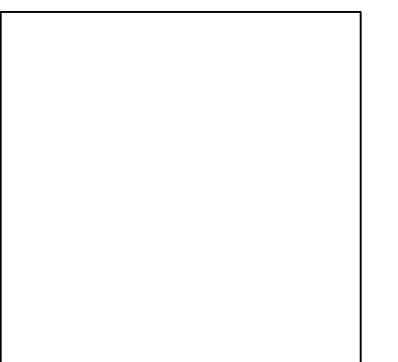
Client: Town of Conway
PO Box 2680
Conway, NH 03818

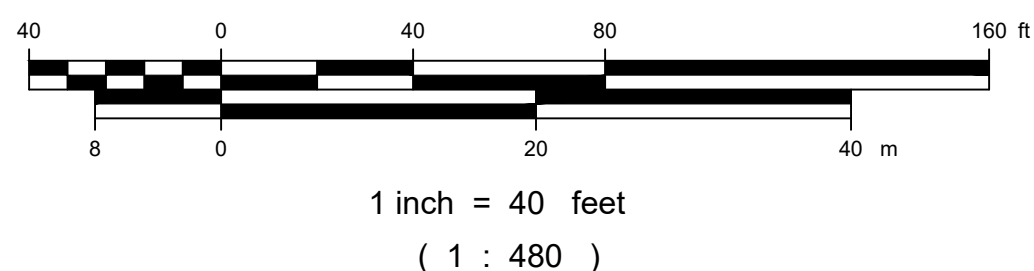
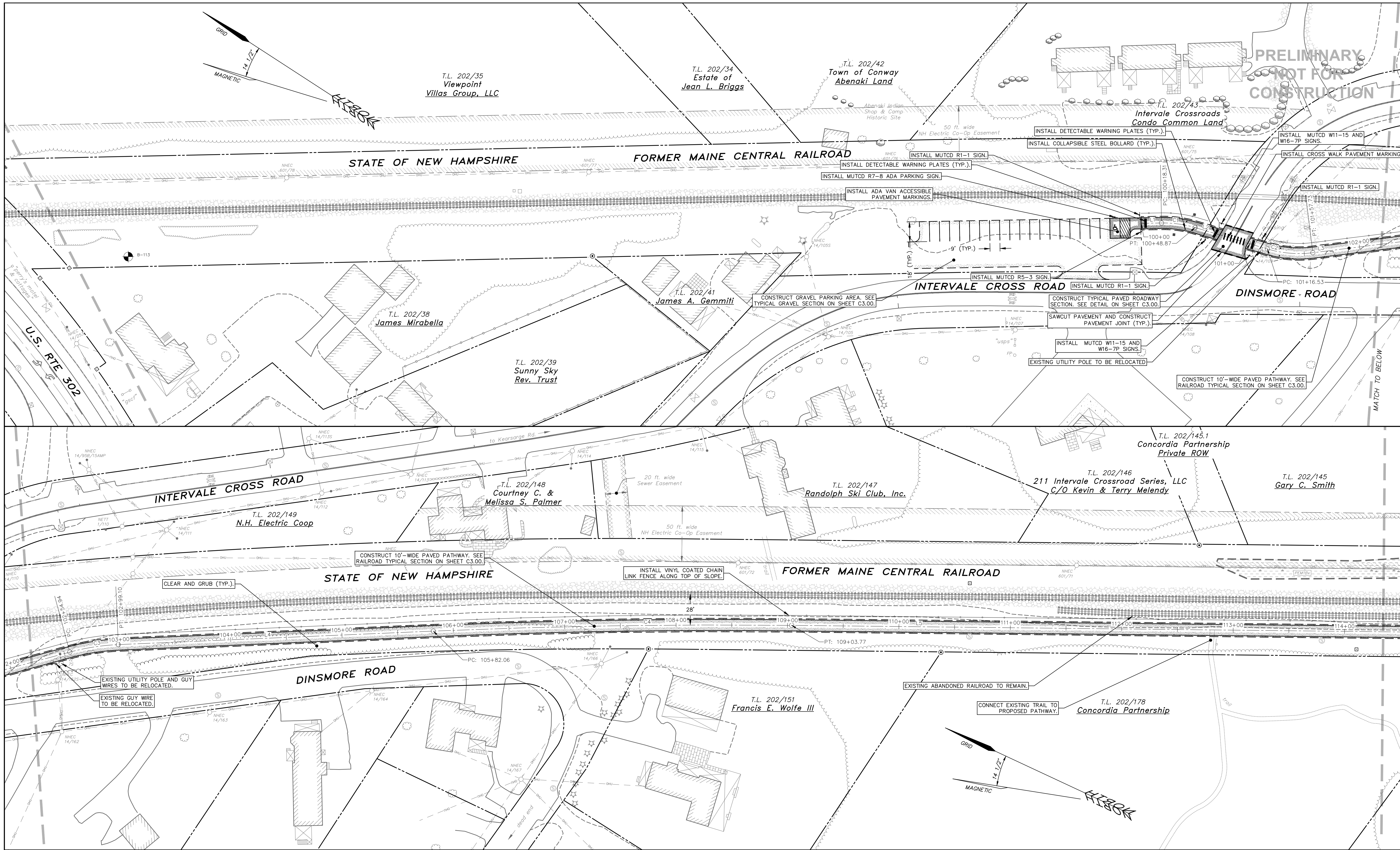
Engineer/Surveyor



HEB
ENGINEERS

PO Box 440, North Conway, NH 03860
(603) 356-6936 - www.hebengineers.com



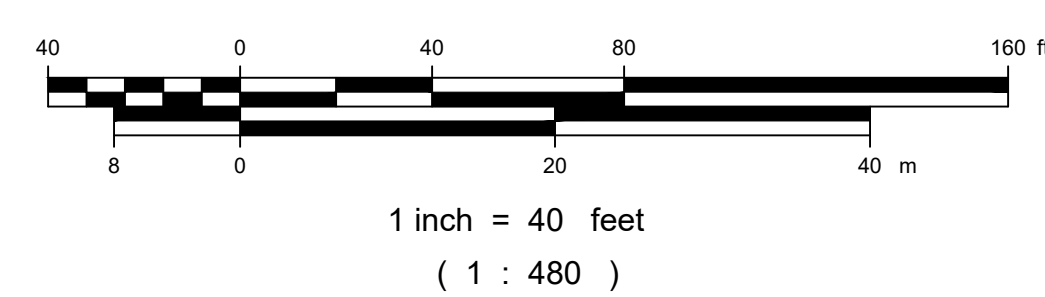
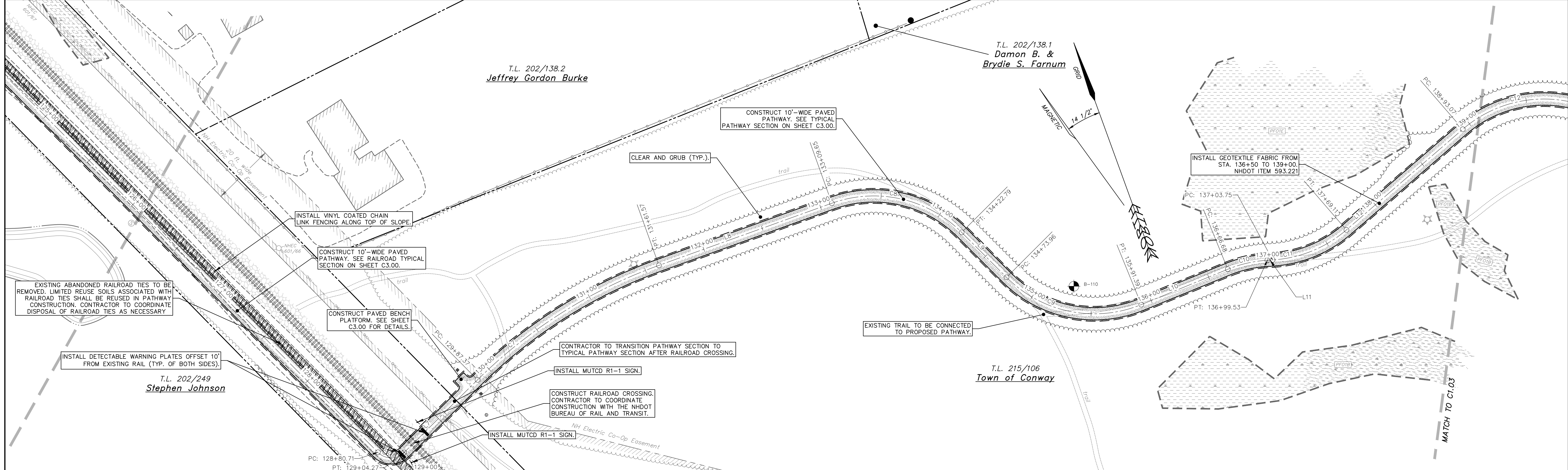
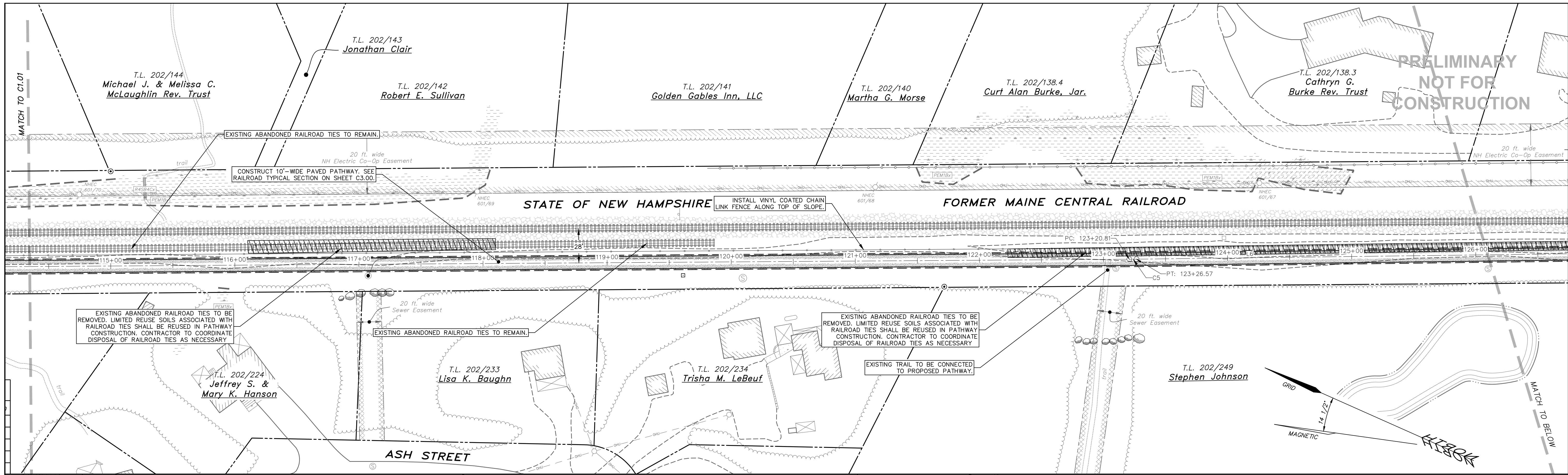


Copyright		2024		HEB Engineers, Inc.	
No.	Revision	DATE	BY		

HEB
ENGINEERS
PO Box 440, North Conway, NH 03860
(603) 356-6936 - www.hebengineers.com

SURVEYED BY	DWI/MPM/JAD
DESIGNED BY	AML
DRAWN BY	AML
CHECKED BY	JMM
FIELD BOOK	375
SCALE	1"=40'
DATE	07/19/2024

Pathway Layout Plan (Sta. 100+00-114+50)
for the
MWVTA Multi-Use Pathway Phase II
located in and prepared for the
Town of Conway, New Hampshire



Copyright	2024	HEB Engineers, Inc.	
No.	Revision	DATE	BY

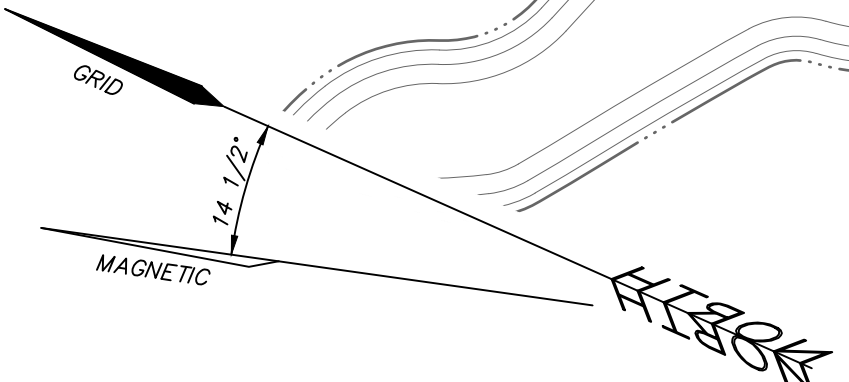
HEB ENGINEERS
PO Box 440, North Conway, NH 03860
(603) 356-6936 - www.hebengineers.com

SURVEYED BY	DWI/MPM/JAD
DESIGNED BY	AML
DRAWN BY	AML
CHECKED BY	JMM
FIELD BOOK	375
SCALE	1"=40'
DATE	07/19/2024

Pathway Layout Plan (Sta. 114+50-139+00)
for the
MWTA Multi-Use Pathway Phase II
located in and prepared for the
Town of Conway, New Hampshire

2020-078B
C1.02
SHEET 7 OF 40

**PRELIMINARY
NOT FOR
CONSTRUCTION**



MATCH TO C1.03

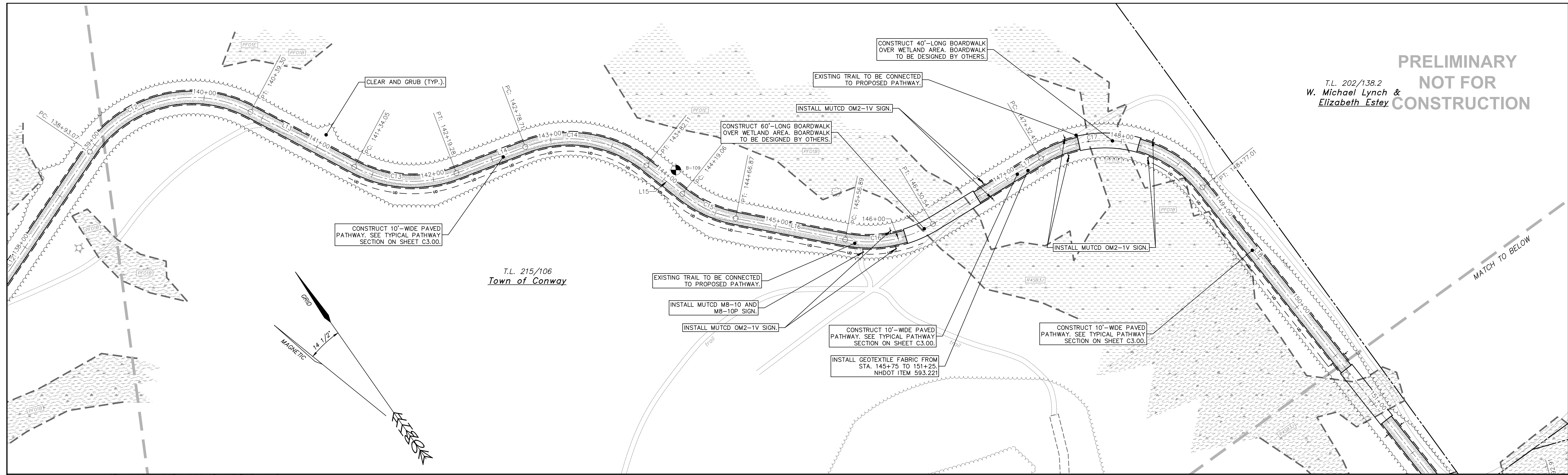
MATCH TO C1.01

MATCH TO BELOW

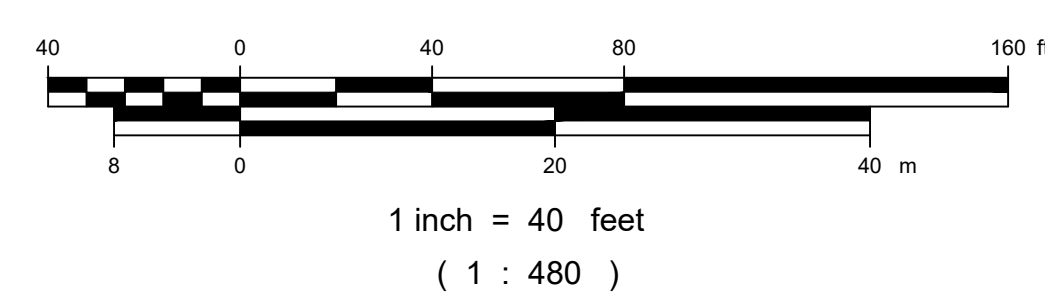
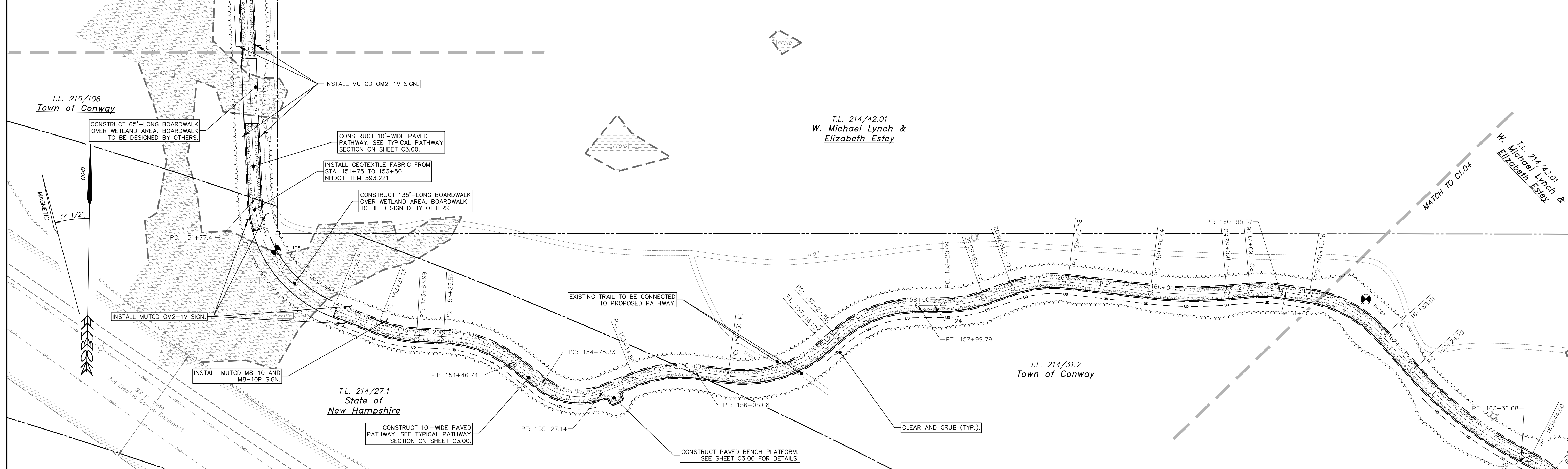
PRELIMINARY
NOT FOR
CONSTRUCTION

T.L. 202/138.2
W. Michael Lynch &
Elizabeth Estey

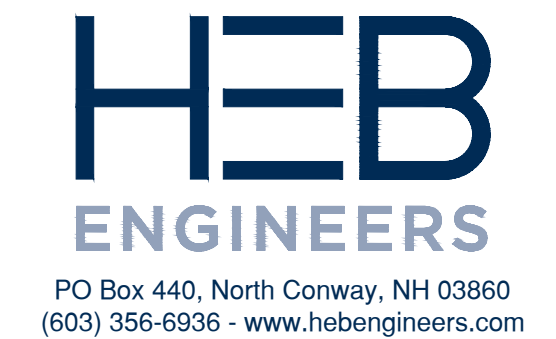
C1.03
SHEET 8 OF 40



2020-078B
Pathway Layout Plan (Sta. 139+00-161+50)
MWVTA Multi-Use Pathway Phase II



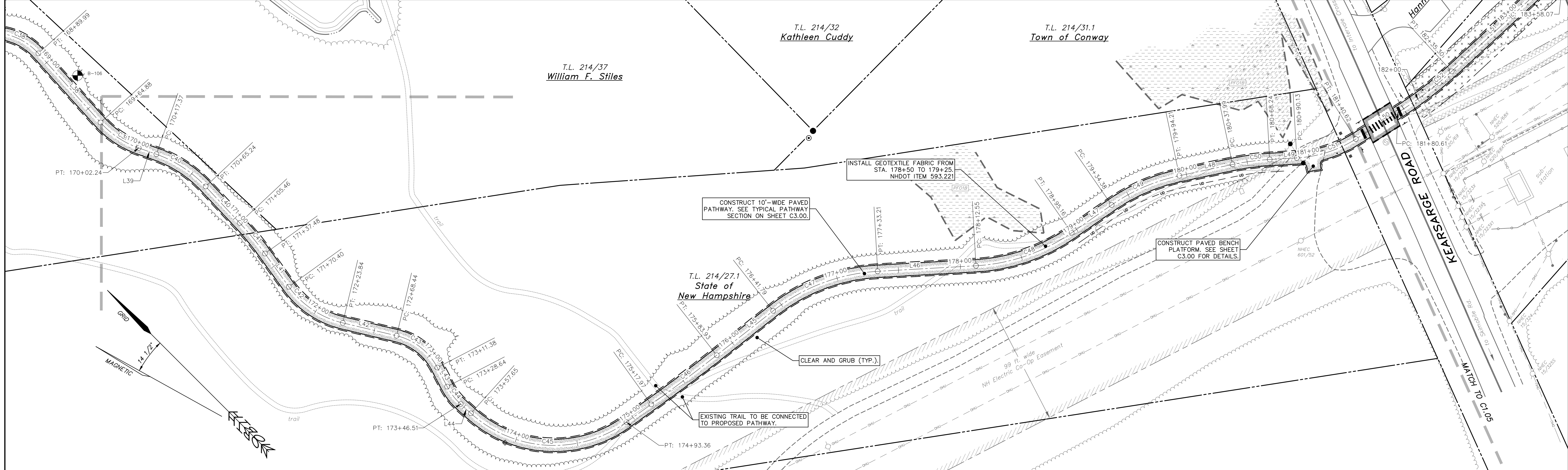
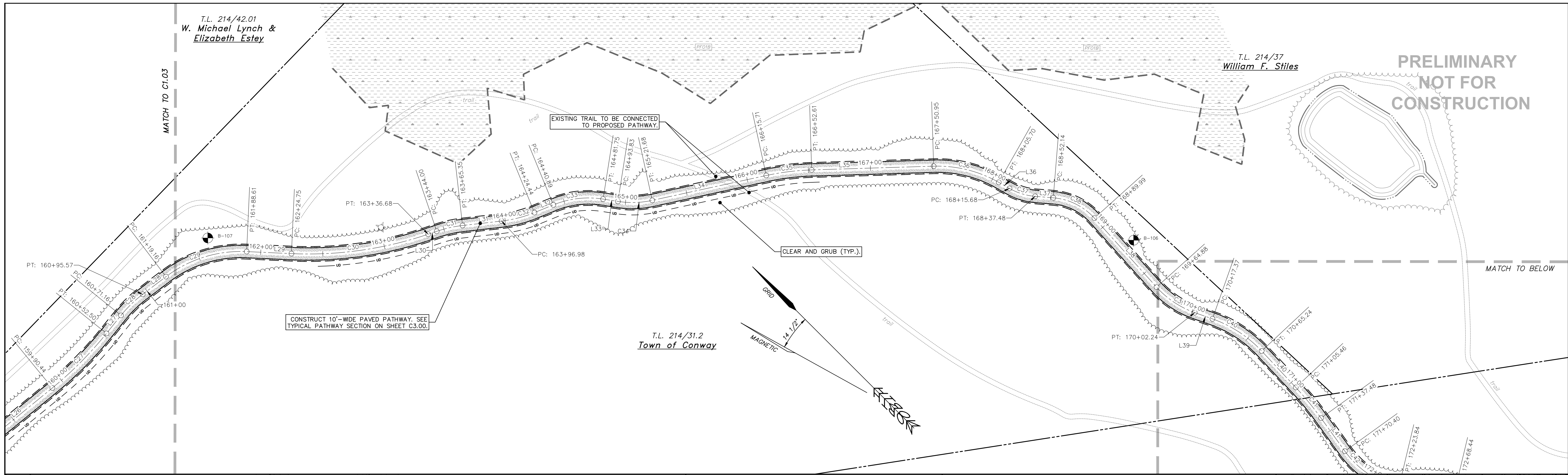
Copyright		2024		HEB Engineers, Inc.	
No.	Revision	DATE	BY		



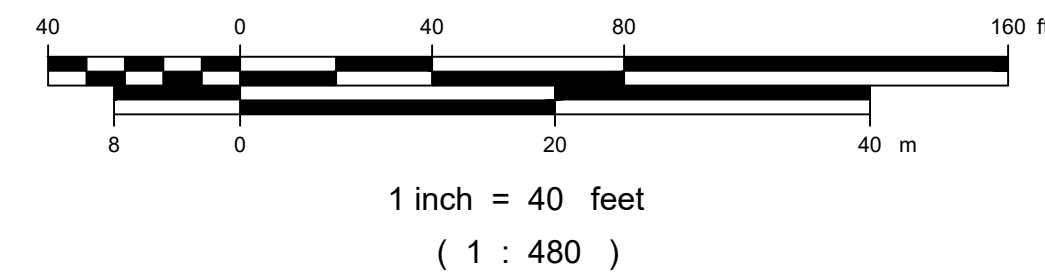
SURVEYED BY	DWI/MPM/JAD
DESIGNED BY	AML
DRAWN BY	AML
CHECKED BY	JMM
FIELD BOOK	375
SCALE	1"=40'
DATE	07/19/2024

Pathway Layout Plan (Sta. 139+00-161+50)
for the
MWVTA Multi-Use Pathway Phase II
located in and prepared for the
Town of Conway, New Hampshire

2020-078B
C1.03
SHEET 8 OF 40



PRELIMINARY
NOT FOR
CONSTRUCTION



Copyright	2024	HEB Engineers, Inc.	
No.	Revision	DATE	BY

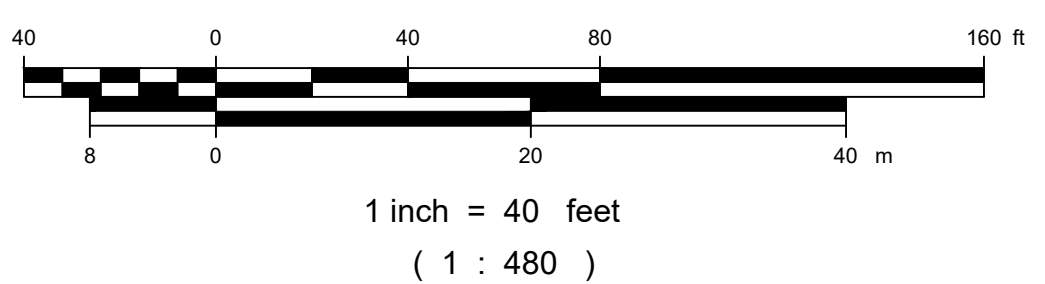
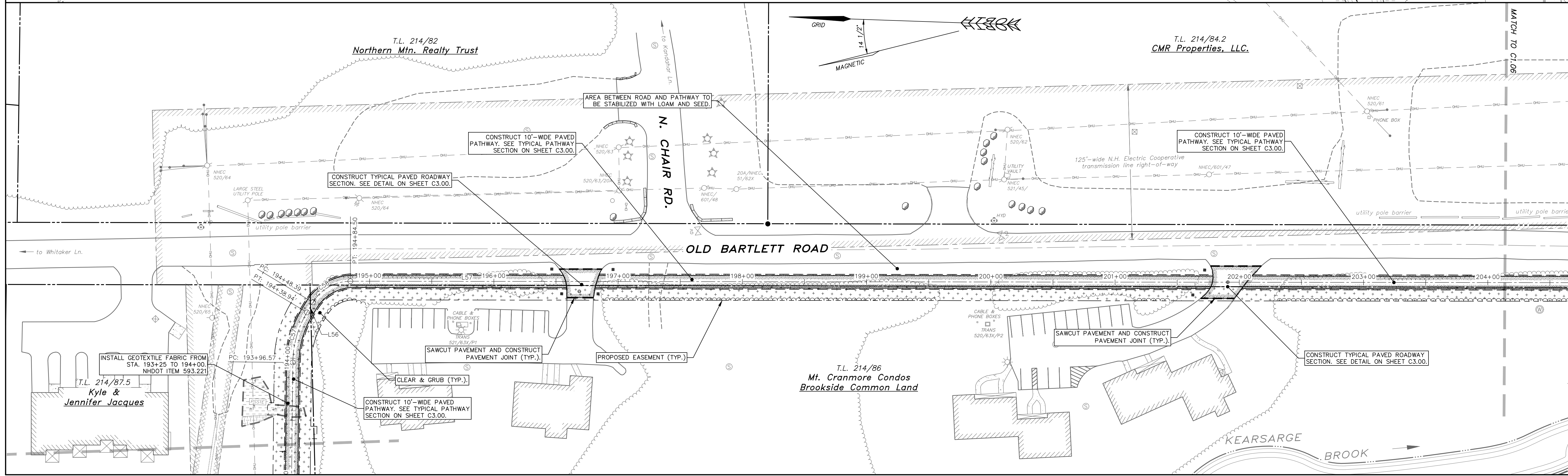
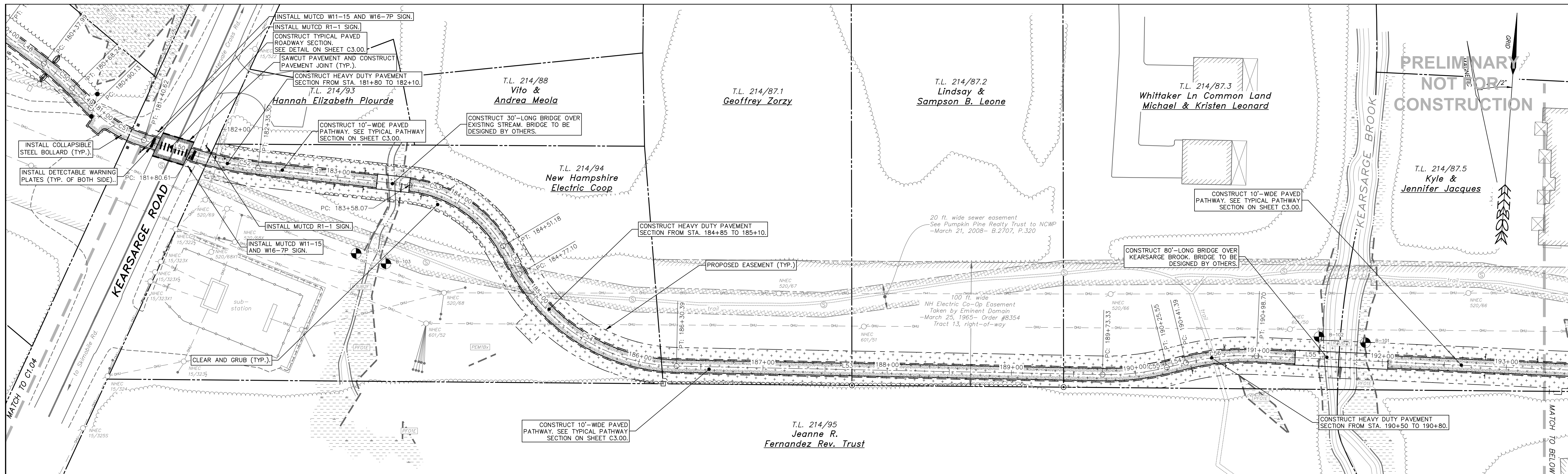
HEB
ENGINEERS
PO Box 440, North Conway, NH 03860
(603) 356-6936 - www.hebengineers.com

SURVEYED BY	DWI/MPM/JAD
DESIGNED BY	AML
DRAWN BY	AML
CHECKED BY	JMM
FIELD BOOK	375
SCALE	1"=40'
DATE	07/19/2024

Pathway Layout Plan (Sta. 161+50-181+50)
for the
MWTA Multi-Use Pathway Phase II
located in and prepared for the
Town of Conway, New Hampshire

2020-078B
C1.04
SHEET 9 OF 40

Published 07/19/2024 07:08:00 AM - MWTA Multi-Use Pathway Phase II - Preliminary Design/Sheet Field C1.04 Pathway Layout Plan.dwg, C1.04_17182024.dwg by P.M. Jarama



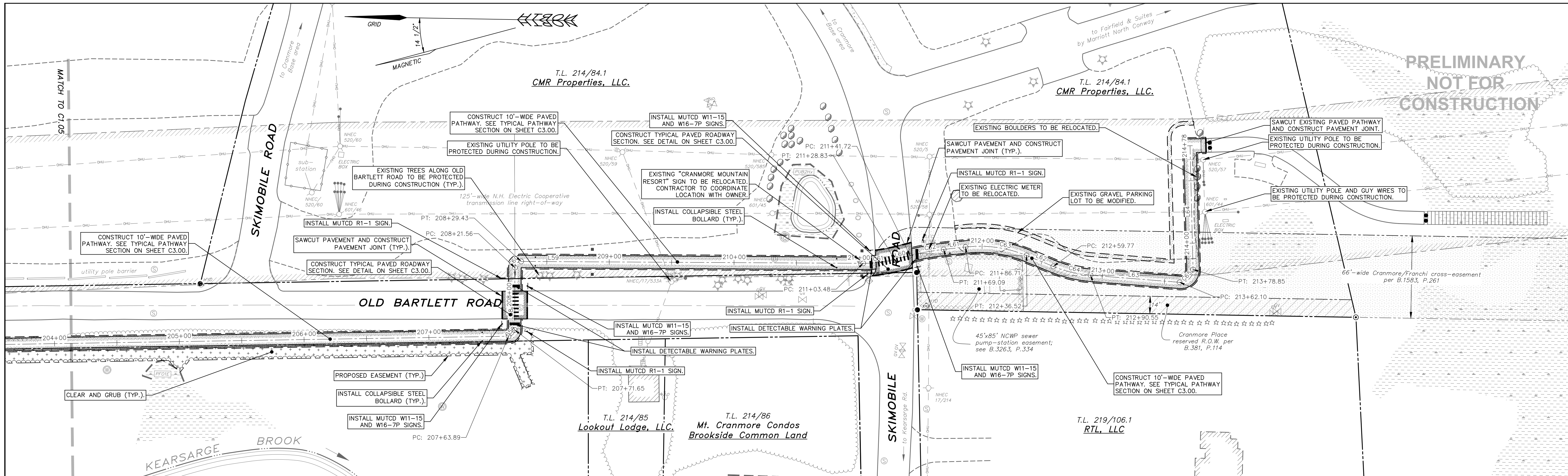
Copyright	2024	HEB Engineers, Inc.	
No.	Revision	DATE	BY

HEB
ENGINEERS
PO Box 440, North Conway, NH 03860
(603) 356-6936 - www.hebengineers.com

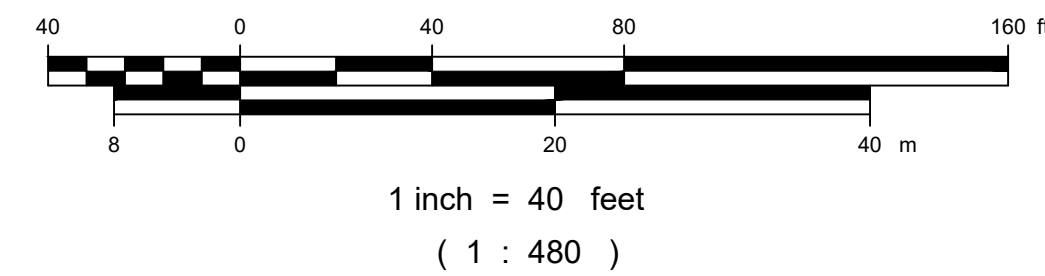
SURVEYED BY	DW/MPM/JAD
DESIGNED BY	AML
DRAWN BY	AML
CHECKED BY	JMM
FIELD BOOK	375
SCALE	1" = 40'
DATE	07/19/2024

Pathway Layout Plan (Sta. 181+50-204+00)
for the
MWTA Multi-Use Pathway Phase II
located in and prepared for the
Town of Conway, New Hampshire

2020-0788B
C1.05
SHEET 10 OF 40



PRELIMINARY
NOT FOR
CONSTRUCTION



Copyright		2024		HEB Engineers, Inc.	
No.	Revision	DATE	BY		

HEB ENGINEERS
PO Box 440, North Conway, NH 03860
(603) 356-6936 - www.hebengineers.com

SURVEYED BY	DWI/MPM/JAD
DESIGNED BY	AML
DRAWN BY	AML
CHECKED BY	JMM
FIELD BOOK	375
SCALE	1"=40'
DATE	07/19/2024

Pathway Layout Plan (Sta. 204+00-214+78)
for the
MWVTA Multi-Use Pathway Phase II
located in and prepared for the
Town of Conway, New Hampshire

2020-078B
C1.06
SHEET 11 OF 40

PRELIMINARY
NOT FOR
CONSTRUCTION